

Creating, together





CONTENTS

08	INSPIRATION
34	SHAPES
62	DECORS
88	COLORS

Made by us

and you

Since 1941, Figgjo has been bringing high-quality tableware, proud Norwegian traditions, and a multitude of porcelain to restaurants, hotels, public spaces, and corporate facilities all over the world.

We firmly believe in the power of creativity and how tableware can elevate the dining experience, bringing joy, laughter, and a sense of unity to gatherings around the table. All the stuff that people can never have too much of.

Let's create inspiring table settings, together.

Excellence in Norwegian porcelain

Figgjo porcelain is modern handicraft on an industrial scale. We make products for the professional market. Products that cater to the senses, that last, that inspire.



Jan Erik Hauge – chef, Figgjo-friend, and partner and culinary advisor at St.13 in Stavanger.

Made in Norway

Figgjo is deeply rooted in the Scandinavian design tradition, where timelessness and versatility shape everything we create. For generations, our skilled artisans have dedicated themselves to perfecting the craft of porcelain production at our factory. Using only the finest natural materials, we ensure a process that is in harmony with the environment. Crafted to last and made with purpose, our products stand the test of time, remaining in use year after year.

Chef approved

For decades, we've partnered with award-winning chefs to create products that meet the demands of the most ambitious dishes. Every detail is purposefully designed for functionality, ensuring each product supports chefs in their work. Through our partnership with the Nordic Chefs Association, we continue to push boundaries, driven by a shared passion for culinary innovation and excellence.

Quality over quantity

Our vitro porcelain withstands the toughest demands of professional kitchens. Made from the same alumina-vitrified clay body, each piece features exceptional strength and durability. With every step, from design to production, handled in-house, we ensure consistency and lasting reliability across our entire range.

Tailored for you

Our flexible system allows you to combine shapes, decorations, and colors to bring your vision to life. From handmade techniques to custom prints, we create decors of the highest in-glaze quality, emphasizing attention to detail and finish. Our designers are here to help refine your ideas, ensuring everything comes together seamlessly. With a minimum order of just 48 pieces, creating something truly unique is easier than ever.



Serving the environment



With one thousand solar panels installed, we generate clean energy that powers our daily office operations.

0 %

waste

10 %

repaired

60 %

renewable energy

100 %

clay and glaze reused

Futureproof

For us, sustainability is never an after-thought; it is ingrained in everything we do. And Figgjo products have been sustainable for a long time. Our products last, and they all serve a specific purpose.

Zero waste

Products that don't meet our quality standards – roughly 4 % – are used as filling for a local construction company. That means 4 % waste is turned into zero waste. We repair as much as 10 % of our products during production. This alone saves us 100 tonnes of CO2 emissions.

Abundant access to clean energy puts Norway in a unique position compared to other countries. As the largest hydropower nation in Europe, 60 % of the energy we use comes from clean, renewable energy.

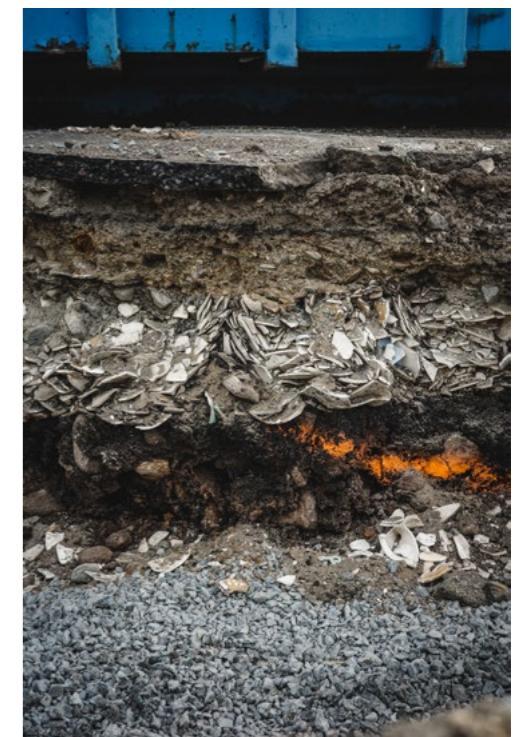
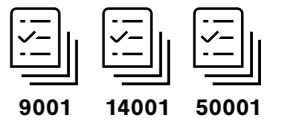
Pioneering EPD

We are calculating the total environmental impact of our products throughout its entire life cycle. From extracting and transportation of raw materials, manufacturing, usage, maintenance, to disposal; “from cradle to grave”. We do this with full transparency measuring our products environmental performance using verified and comparable data. We are the first porcelain table top company to do this. Why? Because we believe our products are better.

Certified management system

Figgjo is dedicated to quality and environmental management, consistently maintaining certified ISO systems. ISO9001 and 14001 is the international standard for managing the company's quality and environmental aspects.

It also ensures compliance with environmental laws and helps build trust with customers who values green initiatives. Figgjo are one of few who also holds the ISO50001 certification for maintaining an energy management system.



Items that don't meet our quality standards are reused as filling materials. Our parking lot is in fact paved with recycled porcelain.



300

plus shapes

15

decor techniques

60

unique colors



possibilities

The pure

In the following pages, you can see how some of our shapes, colors, and decor techniques unfold through four different concepts, where everything is carefully selected, positioned, and color-coordinated to bring joy to the table.

At Figgjo, you have the freedom to mix and match in any way you can imagine. We offer 60 unique colors to choose from, allowing you to customize each piece of porcelain individually. You can create green cups, red plates, and blue bowls, or opt for a monochromatic look. The possibilities are virtually endless.

joy

of tableware



Catering for the pros

Generous curved shapes and a refined color palette elevate the buffet setup to an exclusive experience of abundance.





We are a market-leading brand for larger-sized products, offering a host of design, flexibility, and decor options.

MIX & MATCH – “CATERING FOR THE PROS”

See the selected shapes, decors, and colors for this concept below:



1110HH
Fri tray



1081HH & 1083HH
1000-series jar/bowl



1627HH
Arena form low



1111HH & 1112HH
Fri tray/plate



1061GH & 1084HH
1000-series jar/bowl



1626HH & 1625HH
Arena form low

DECORS



Ela

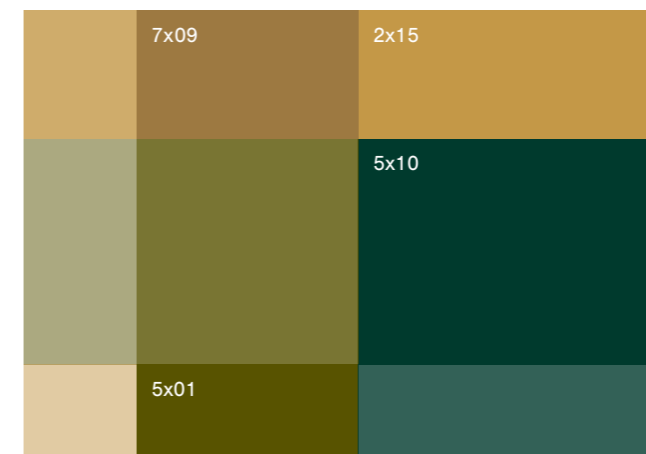


Skygge



Spray

COLORS



See all available colors on page 88.



Crafted with care

Six different series and five unique hand techniques come together in an including and warm celebration of craft and color.



Colors don't clash, they are also the spice of life. At Figgjo, we spend a lot of time developing new colors in our dedicated color lab. We have sixty unique shades of color to choose from.



MIX & MATCH – "CRAFTED WITH CARE"

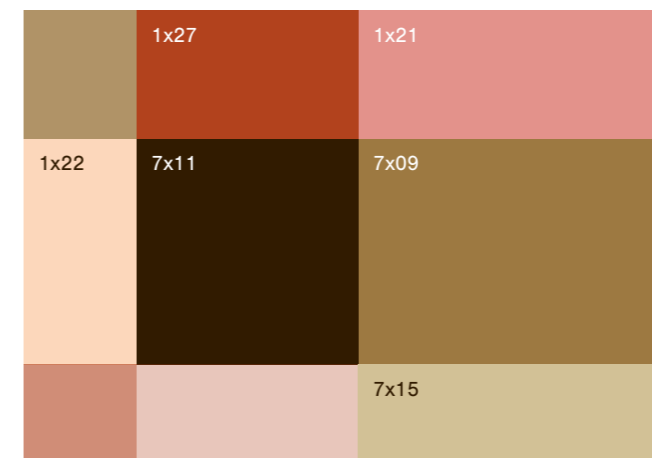
See the selected shapes, decors, and colors for this concept below:



DECORS



COLORS



See all available colors on page 88.



(G)radient green

This green team showcases Furo in six beautiful shades of green, complemented by our stoneware accessories made from recycled clay. See page 60.



MIX & MATCH –“(G)RADIANT GREEN”

See the selected shapes, decors, and colors for this concept below:



6004HH
Furo plate



6265CH
Furo bowl



6925HH
Pax plate



SW0063
Tilt plate



SW0020
Tilt bowl



SW0094
Tilt jug

DECORS

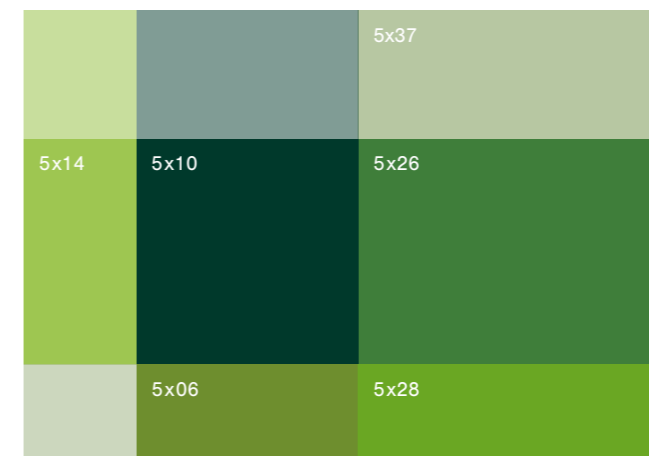


360



Spray

COLORS



See all available colors on page 88.



Cater with colors

The soft lines of Pax are accompanied by small Base bowls to create a playful and inviting feast for the eyes





MIX & MATCH – “CATER WITH COLORS”

See the selected shapes, decors, and colors for this concept below:



6925HH
Pax plate



6914HH
Pax tray/plate



6915HH
Pax tray/plate



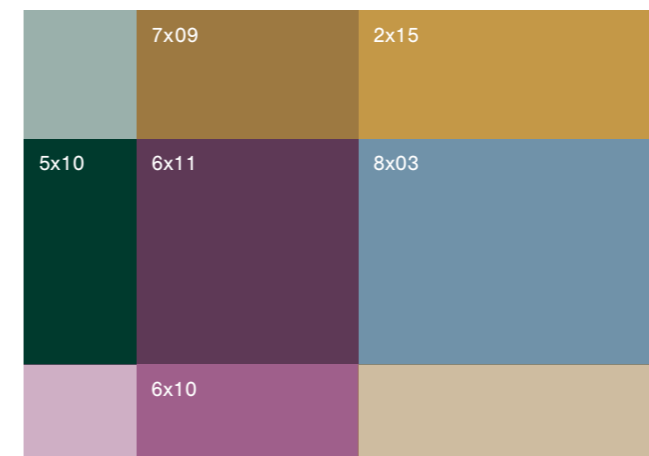
5523HH
Base bowl

DECORS



Spray

COLORS



See all available colors on page 88.

From Michelin stars to your everyday bistro

In Norway, Figgjo has been a household brand for generations. Although we no longer make porcelain aimed at private households, the scope of our products is wider than ever before.

Because of the quality and flexibility we offer, Figgjo porcelain can be used anywhere and for any serving purpose.



Your story, tell it well

Figgjo offers bespoke decor options to help you give your project that unique, personal touch. Our designers will gladly assist you in creating a concept where different products and decor techniques complement each other beautifully.

For bespoke orders, please contact us for more information.



Quality Branded is a collection of upscale restaurants based in New York City. This includes Bad Roman ↑ and Twin Tails → among others.



“We love Figgjo’s timeless design and consistent quality, which enhances our graphic profile and aligns with our vision.”

Craig Koketsu, Chef and Partner at Quality Branded





“At WE ARE EDN, every detail is a reflection of our commitment to nature, quality, and conscious dining. Figgjo’s exquisite products, crafted with sustainability at its core, embodies the balance of beauty and durability we seek. Their commitment to zero-waste production and timeless Scandinavian design aligns seamlessly with our vision—ensuring that every plate served is not just a meal, but a cool, fun and mindful experience.”

Fayaz Nazeer, Senior Director Brand Food & Beverage Development, EMEA



WE ARE EDN – a concept for DoubleTree by Hilton EMEA



Customized concept for the W Hotel Prague.

“My goal is to create designs that enhance users’ everyday lives and endure for generations.”

Miriam Kristoffersen, Decor Designer at Figgjo

Imagination is the beginning of creation.
You imagine what you desire, you will what you
imagine, and at last, you create what you will.

George Bernard Shaw



@nowon.usa



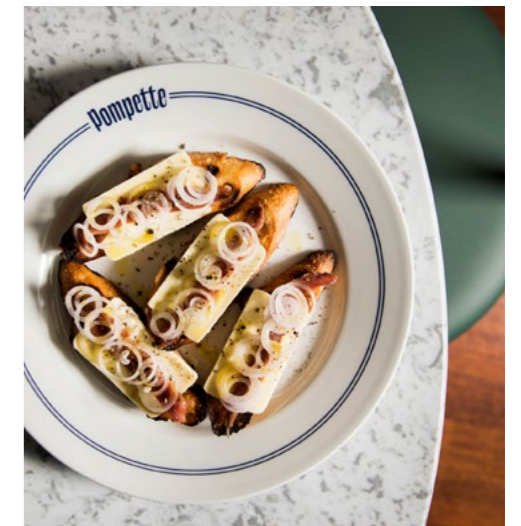
@sirkusrenaa



@lutlagetoslo



@nasjonalmuseetkafe



@pompetterestaurant



@brass_tuskbar



@thesaltline

@figgjo_norway

Find more inspiration on Instagram, Pinterest or
Facebook. Tag us with #figgjo_norway for a chance
to be featured.



Porcelain for every need

Our different series mix splendidly, all sharing the same shade of white. The beautiful, flowing lines of one series find their counterpoint in the angular shapes of another.

All our porcelain is glazed and non-porous, facilitating a superior, frictionless eating experience.

When deciding which products to go for, a little guidance often comes in handy. Nobody knows our products better than we do, and we are eager to help. For us, the ideal customer journey is a personal one. Everyone is welcome to visit us here at the factory, to get to know us and learn more about our products.



DURABLE

Our durable vitro porcelain is made with alumina, making it highly shock resistant



STACKABLE

Maximizing kitchen space and providing a glazed finish for durability



DISHWASHER SAFE

Using a rinsing agent will help extend the lifespan of your porcelain



OVEN-SAFE

For use in microwaves and ovens at temperatures up to 300°C (570°F)



SUPERIOR GLAZE

Glazed porcelain is durable, hygienic, quiet with cutlery, less noisy when stacked, and comfortable to the touch



WARRANTY

We offer a five-year edge chip warranty on most of our round plates

Front items



DESIGN AWARD
Red Dot - Figgjo Oslo



Aura plate

- 9063HH 19,5 cm | H 3 cm | 25 cl
7 3/4" | H 1 1/4" | 8 1/2 oz
- 9004HH 27,5 cm | H 3 cm | 60 cl
10 3/4" | H 1 1/4" | 20 1/4 oz



Oslo jug

- 9086HH 10,5 x 14 cm | H 10 cm | 30 cl
4 1/4" x 5 1/2" | H 4" | 10 1/4 oz
- 9086LH 8 cm | H 3 cm
/Lid 3 1/4" | H 1 1/4"



Oslo cup

- 9060GH 8,5 cm | H 6,5 cm | 20 cl
/Split 3 1/4" | H 2 1/2" | 6 3/4 oz
- 9058GH 8,5 cm | H 6,5 cm | 20 cl
/Open 3 1/4" | H 2 1/2" | 6 3/4 oz
- 9057GH 8,5 cm | H 6,5 cm | 20 cl
/Tulip 3 1/4" | H 2 1/2" | 6 3/4 oz



Cylinder bowl

- 4021HH 13 cm | H 4,2 cm | 38 cl
5" | H 1 3/4" | 12 3/4 oz
- 4022HH 10 cm | H 3,7 cm | 16 cl
4" | H 1 1/2" | 5 1/2 oz
- 4023HH 6 cm | H 2,6 cm | 5 cl
2 1/4" | H 1" | 1 3/4 oz



Podie tray/plate

- 4021CH 13 cm | H 4,2 cm
5" | H 1 3/4"
- 4022CH 10 cm | H 3,7 cm
4" | H 1 1/2"
- 4023CH 6 cm | H 2,6 cm
2 1/4" | H 1"



Pisa bowl

- 7084HH 11,5 x 12 cm | H 5,7 cm | 43 cl
4 1/2" x 4 3/4" | H 2 1/4" | 14 1/2 oz
- 7084LH 11,5 cm | H 1,5 cm
/Lid 4 1/2" | H 1/2"
- 7088HH 9 x 9,5 cm | H 5,3 cm | 25 cl
3 1/2" x 3 3/4" | H 2" | 8 1/2 oz
- 7088LH 9 cm | H 1,2 cm
/Lid 3 1/2" | H 1/2"



Svai bowl

- 9017HH 30 cm | H 6,7 cm | 250 cl
/Large 11 3/4" | H 2 3/4" | 84 1/2 oz
- 9015HH 41 cm | H 8,7 cm | 700 cl
/Large 16 1/4" | H 3 1/2" | 236 3/4 oz
- 9018HH 21 cm | H 5 cm | 100 cl
8 1/4" | H 2" | 33 3/4 oz



Plattform tray/plate

- 9022HH 42 x 12 cm | H 2,2 cm
/Large 16 1/2" x 4 3/4" | H 3/4"
- 9020HH 9 x 9 cm | H 2,2 cm
3 1/2" x 3 1/2" | H 3/4"



Hval tray

- 9014HH 58 x 24 cm | H 7 cm | 200 cl
/Large 22 3/4" x 9 1/2" | H 2 3/4" | 67 3/4 oz

Front Dining collection



Front Dining plate

- 8004HH 27 cm | H 2,9 cm
10 3/4" | H 1 1/4"
- 8013HH 32 cm | H 3 cm
12 1/2" | H 1 1/4"



Front Dining plate w/o rim

- 8005CH 30 cm | H 2,4 cm
11 3/4" | H 1"
- 8063CH 21 cm | H 2 cm
8 1/4" | H 3/4"
- 8065CH 15 cm | H 1,7 cm
6" | H 3/4"



Front Dining deep plate

- 8007HH 24 cm | H 4,2 cm | 20 cl
9 1/2" | H 1 3/4" | 6 3/4 oz
- 8008HH 27 cm | H 4,3 cm | 30 cl
10 3/4" | H 1 3/4" | 10 1/4 oz



Front Dining plate wide rim

- 8005HH 30 cm | H 3,3 cm
11 3/4" | H 1 1/4"



Front Dining saucer

- 8059UH 12,5 cm | H 2 cm
5" | H 3/4"
- 8057UH 14,5 cm | H 2,1 cm
5 3/4" | H 3/4"
- 8061UH 16 cm | H 2,1 cm
6 1/4" | H 3/4"



Front Dining cup

- 8059HH 5,8 cm | H 5,2 cm | 8 cl
fits 8059UH 2 1/4" | H 2" | 2 3/4 oz



Front Dining cup

- 8057HH 7,3 cm | H 6,5 cm | 18 cl
fits 8057UH 2 3/4" | H 2 1/2" | 6 oz



Front Dining cup

- 8061HH 9,9 cm | H 7,6 cm | 30 cl
fits 8061UH 4" | H 3" | 10 1/4 oz



TIPS

Our fine-dine option features elegant plates that are perfect for demanding chefs

Base collection



Base plate

2105HH 30 cm | H 1,7 cm
11 3/4" | H 3/4"



Base plate

5504HH 27 cm | H 2,2 cm
10 3/4" | H 3/4"



Base plate high edge

5520HH 22 cm | H 4 cm | 90 cl
8 3/4" | H 1 1/2" | 30 1/2 oz



Base plate w/ handle

5504CH 27 x 33,5 cm | H 5,5 cm
10 3/4" x 13 1/4" | H 2 1/4"

5516CH 16 x 18,5 cm | H 6,3 cm | 40 cl
6 1/4" x 7 1/4" | H 2 1/2" | 13 1/2 oz

5554CH 18 x 28 cm | H 5 cm
/Square 7" x 11" | H 2"

5550CH 24 x 10 cm | H 5,2 cm
/Square 9 1/2" x 4" | H 2"



Base plate semi deep

5510HH 27 cm | H 4,2 cm | 40 cl
10 3/4" | H 1 3/4" | 13 1/2 oz



Base bowl deep

5506HH 20 cm | H 5,4 cm | 26 cl
7 3/4" | H 2 1/4" | 8 3/4 oz

5507HH 24 cm | H 7 cm | 70 cl
9 1/2" | H 2 3/4" | 23 3/4 oz



Base bowl

5522HH 10 cm | H 3,3 cm | 14 cl
4" | H 1 1/4" | 4 3/4 oz

5523HH 7 cm | H 3 cm | 5 cl
2 3/4" | H 1 1/4" | 1 3/4 oz



Base cup

5559HH 5,5 cm | H 5,5 cm | 8 cl
fits 5559UH 2 1/4" | H 2 1/4" | 2 3/4 oz

5559GH 5,5 cm | H 5,5 cm | 8 cl
w/o handle 2 1/4" | H 2 1/4" | 2 3/4 oz



Base cup

5558HH 7 cm | H 7,1 cm | 19 cl
fits 5557UH 2 3/4" | H 2 3/4" | 6 1/2 oz

5558GH 7 cm | H 7,1 cm | 19 cl
w/o handle 2 3/4" | H 2 3/4" | 6 1/2 oz

5561HH 10 cm | H 6,5 cm | 30 cl
fits 5557UH 4" | H 2 1/2" | 10 1/4 oz



Base saucer

5557UH 14,5 cm | H 2,2 cm
5 3/4" | H 3/4"

5559UH 13 cm | H 2 cm
5" | H 3/4"

3021UH 17 cm | H 2,1 cm
6 3/4" | H 3/4"



Base mug

5542HH 7,2 cm | H 9,1 cm | 26 cl
2 3/4" | H 3 1/2" | 8 3/4 oz

5542GH 7,2 cm | H 9,1 cm | 26 cl
w/o handle 2 3/4" | H 3 1/2" | 8 3/4 oz

5541HH 6,8 cm | H 8,5 cm | 22 cl
2 3/4" | H 3 1/4" | 7 1/2 oz



Base cup

5562HH 12 cm | H 6,2 cm | 50 cl
fits 3021UH 4 3/4" | H 2 1/2" | 17 oz

Furo collection



Furo dinner plate

6005HH 30 cm | H 1,3 cm
11 3/4" | H 1/2"

6004HH 27 cm | H 1,3 cm
10 3/4" | H 1/2"



Furo lunch plate

6001HH 24 cm | H 1,3 cm
9 1/2" | H 1/2"

6063HH 21 cm | H 1,3 cm
8 1/4" | H 1/2"



Furo appetizer plate

6064HH 18 cm | H 1,3 cm
7" | H 1/2"

6065HH 15 cm | H 1,3 cm
6" | H 1/2"



Furo embossed plate

6104HH 27 cm | H 3 cm
10 3/4" | H 1 1/4"



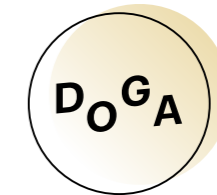
Furo embossed bowl

6265CH 15 cm | H 7 cm | 65 cl
6" | H 2 3/4" | 22 oz



Furo embossed deep plate

6263HH 21 cm | H 5 cm
8 1/4" | H 2"



DESIGN AWARD
DOGA - Figgjo Verde

Verde collection



Verde plate

2504HH 27 cm | H 3,2 cm
10 3/4" | H 1 1/4"

2505HH 30 cm | H 3,2 cm
11 3/4" | H 1 1/4"



Verde plate

2563HH 21 cm | H 2,3 cm
8 1/4" | H 1"

2564HH 17 cm | H 2,3 cm
6 3/4" | H 1"



Verde deep plate

2518HH 20 cm | H 4,8 cm | 60 cl
7 3/4" | H 2" | 20 1/4 oz



Combo deep plate

3017HH 29 cm | H 5,8 cm | 180 cl
11 1/2" | H 2 1/4" | 60 3/4 oz

3018HH 27 cm | H 5,2 cm | 140 cl
10 3/4" | H 2" | 47 1/4 oz



Verde mug

2542HH 7,1 cm | H 11,4 cm | 30 cl
2 3/4" | H 4 1/2" | 10 1/4 oz



Verde mug

2541HH 6,4 cm | H 10,2 cm | 22 cl
2 1/2" | H 4" | 7 1/2 oz

Grad collection



Grad plate

- 2705HH 30 cm | H 2,9 cm
11 3/4" | H 1 1/4"
- 2704HH 27 cm | H 2,8 cm
10 3/4" | H 1"
- 2702HH 24,8 cm | H 2,5 cm
9 3/4" | H 1"
- 2701HH 24 cm | H 2,4 cm
9 1/2" | H 1"



Grad plate

- 2763HH 21 cm | H 2,2 cm
8 1/4" | H 3/4"
- 2764HH 17 cm | H 2 cm
6 3/4" | H 3/4"
- 2765HH 14,5 cm | H 2 cm
5 3/4" | H 3/4"



Grad deep plate

- 2707HH 24 cm | H 4,3 cm | 45 cl
9 1/2" | H 1 3/4" | 15 1/4 oz
- 2706HH 21 cm | H 3,7 cm | 28 cl
8 1/4" | H 1 1/2" | 9 1/2 oz



Grad plate semi deep

- 2710HH 30 cm | H 3,9 cm | 60 cl
11 3/4" | H 1 1/2" | 20 1/4 oz



Grad plate wide rim

- 2703HH 27 cm | H 2,5 cm
10 3/4" | H 1"



Grad deep plate wide rim

- 2708HH 27 cm | H 5 cm | 31 cl
10 3/4" | H 2" | 10 1/2 oz



FUN FACT

This series serves as the foundation for Figgjo Bris, which is displayed on the right page

Bris collection



Bris plate

- 3705HH 30 cm | H 2,9 cm
11 3/4" | H 1 1/4"
- 3704HH 27 cm | H 2,8 cm
10 3/4" | H 1"
- 3701HH 24 cm | H 2,4 cm
9 1/2" | H 1"
- 3763HH 21 cm | H 2,2 cm
8 1/4" | H 3/4"
- 3764HH 17 cm | H 2 cm
6 3/4" | H 3/4"
- 3765HH 14,5 cm | H 2 cm
5 3/4" | H 3/4"



Bris plate deep

- 3707HH 24 cm | H 4,3 cm | 45 cl
9 1/2" | H 1 3/4" | 15 1/4 oz
- 3706HH 21 cm | H 3,7 cm | 28 cl
8 1/4" | H 1 1/2" | 9 1/2 oz



Bris plate semi deep

- 3710HH 30 cm | H 3,9 cm | 60 cl
11 3/4" | H 1 1/2" | 20 1/4 oz



Bris plate deep wide rim

- 3708HH 27 cm | H 5 cm | 31 cl
10 3/4" | H 2" | 10 1/2 oz



Bris saucer/plate

- 3761UH 16 cm | H 1,5 cm
fits 1061HH 6 1/4" | H 1/2"
- 3759UH 12,5 cm | H 1 cm
fits 1059HH 5" | H 1/2"
- 3757UH 14,5 cm | H 1,5 cm
fits 1057HH 5 3/4" | H 1/2"



Bris plate wide rim

- 3703HH 27 cm | H 2,5 cm
10 3/4" | H 1"



Ting collection



Ting plate

2813HH 32 cm | H 3,7 cm
12 1/2" | H 1 1/2"



Ting plate

2801HH 24 cm | H 3,3 cm
9 1/2" | H 1 1/4"
2861CH 17 cm | H 3,3 cm | 40 cl
6 3/4" | H 1 1/4" | 13 1/2 oz
2857CH 12,5 cm | H 3,3 cm | 20 cl
5" | H 1 1/4" | 6 3/4 oz



Ting deep plate

2853HH 21 cm | H 5 cm | 100 cl
8 1/4" | H 2" | 33 3/4 oz
2852HH 17 cm | H 5 cm | 60 cl
6 3/4" | H 2" | 20 1/4 oz
2851HH 14,5 cm | H 5 cm | 45 cl
5 3/4" | H 2" | 15 1/4 oz



Ting plate

2863HH 21 cm | H 2,5 cm
8 1/4" | H 1"



DESIGN AWARD
DOGA - Figgjo Ting



Ting saucer

2857UH 12,5 cm | H 3,3 cm
5" | H 1 1/4"



Ting cup

2859HH 6,2 cm | H 6,2 cm | 8 cl
fits 2857UH 2 1/2" | H 2 1/2" | 2 3/4 oz
2859GH 6,2 cm | H 6,2 cm | 8 cl
w/o handle 2 1/2" | H 2 1/2" | 2 3/4 oz



Ting cup

2857HH 7,5 cm | H 7,8 cm | 17 cl
fits 2857UH 3" | H 3" | 5 3/4 oz
2857GH 7,5 cm | H 7,8 cm | 17 cl
w/o handle 3" | H 3" | 5 3/4 oz



Ting mug

2842HH 8,2 cm | H 9,8 cm | 28 cl
3 1/4" | H 3 3/4" | 9 1/2 oz
2842GH 8,2 cm | H 9,8 cm | 28 cl
w/o handle 3 1/4" | H 3 3/4" | 9 1/2 oz

Pax collection



Pax plate

6904HH 26 cm | H 1,6 cm
10 1/4" | H 3/4"
6901HH 24 cm | H 1,6 cm
9 1/2" | H 3/4"
6902HH 22 cm | H 1,6 cm
8 3/4" | H 3/4"



Pax bowl

6918HH 17 cm | H 6,5 cm | 70 cl
6 3/4" | H 2 1/2" | 23 3/4 oz



Pax bowl

6919HH 14 cm | H 6,5 cm | 50 cl
5 1/2" | H 2 1/2" | 17 oz



Pax tray/plate

6915HH 41 x 13 cm | H 1,6 cm
16 1/4" x 5" | H 3/4"



Pax plate

6914HH 30 x 13 cm | H 1,6 cm
11 3/4" x 5" | H 3/4"



Pax plate

6925HH 20 x 13 cm | H 1,6 cm
7 3/4" x 5" | H 3/4"

24 collection



24-series plate

2404HH 27 cm | H 2,2 cm
10 3/4" | H 3/4"
2401HH 24 cm | H 2 cm
9 1/2" | H 3/4"
2463HH 21 cm | H 2 cm
8 1/4" | H 3/4"
2464HH 17 cm | H 1,5 cm
6 3/4" | H 1/2"



24-series deep plate

2407HH 21 cm | H 4,8 cm | 50 cl
8 1/4" | H 2" | 17 oz
2448HH 17 cm | H 4,5 cm | 25 cl
6 3/4" | H 1 3/4" | 8 1/2 oz



24-series plate semi deep

2406HH 22 cm | H 3 cm | 40 cl
8 3/4" | H 1 1/4" | 13 1/2 oz



24-series cup

2441HH 8,1 cm | H 6,8 cm | 22 cl
fits 1757UH 3 1/4" | H 2 3/4" | 7 1/2 oz
2441GH 8,1 cm | H 6,8 cm | 22 cl
w/o handle 3 1/4" | H 2 3/4" | 7 1/2 oz

Klassik collection



Klassik plate

1305HH	30 cm H 2,4 cm 11 3/4" H 1"
1304HH	26,5 cm H 2,2 cm 10 1/2" H 3/4"
1301HH	24 cm H 2,2 cm 9 1/2" H 3/4"
1363HH	21 cm H 2,1 cm 8 1/4" H 3/4"
1364HH	17 cm H 1,9 cm 6 3/4" H 3/4"



Klassik deep plate

1307HH	24 cm H 4 cm 38 cl 9 1/2" H 1 1/2" 12 3/4 oz
1306HH	21 cm H 3 cm 18 cl 8 1/4" H 1 1/4" 6 oz



Klassik oval plate

1714HH	30 x 23 cm H 2,6 cm 11 3/4" x 9" H 1"
1715HH	35 x 27 cm H 3 cm 13 3/4" x 10 3/4" H 1 1/4"



Klassik stacking cup

1858HH	7,5 cm H 7 cm 19 cl fits 1757UH 3" H 2 3/4" 6 1/2 oz
--------	---



Klassik cup

1758HH	7,1 cm H 7 cm 19 cl fits 1757UH 2 3/4" H 2 3/4" 6 1/2 oz
--------	---



Klassik sugar bowl

1759GH	7,5 cm H 5 cm 12 cl 3" H 2" 4 oz
--------	---



Klassik stacking mug

1841HH	6,8 cm H 8,4 cm 22 cl 2 3/4" H 3 1/4" 7 1/2 oz
--------	---



Klassik mug

1741HH	6,8 cm H 8,6 cm 22 cl 2 3/4" H 3 1/2" 7 1/2 oz
1742HH	7,2 cm H 9,1 cm 26 cl 2 3/4" H 3 1/2" 8 3/4 oz



Klassik saucer

1757UH	14,5 cm H 1,8 cm 5 3/4" H 3/4"
--------	---------------------------------------

35 collection



35-series plate

2004HH	26,5 cm H 2,3 cm 10 1/2" H 1"
2001HH	24 cm H 2,3 cm 9 1/2" H 1"
2063HH	21 cm H 1,8 cm 8 1/4" H 3/4"
2064HH	17 cm H 1,8 cm 6 3/4" H 3/4"



35-series deep plate

2006HH	21,5 cm H 3,5 cm 40 cl 8 1/2" H 1 1/2" 13 1/2 oz
--------	---



35-series sugar bowl

3588HH	8 cm H 4,5 cm 15 cl 3 1/4" H 1 3/4" 5 oz
--------	---



35-series stacking cup

3557HH	7,4 cm H 6 cm 15 cl fits 3557UH 3" H 2 1/4" 5 oz
3560HH	7,5 cm H 7,6 cm 22 cl fits 3560UH 3" H 3" 7 1/2 oz



35-series stacking cup

3561HH	8,5 cm H 6,4 cm 22 cl fits 3561UH 3 1/4" H 2 1/2" 7 1/2 oz
--------	---



35-series saucer

3557UH	12,5 cm H 1,8 cm 5" H 3/4"
3561UH	14 cm H 1,8 cm 5 1/2" H 3/4"
3560UH	14,5 cm H 1,9 cm 5 3/4" H 3/4"



35-series stacking mug

3542HH	7,6 cm H 8,6 cm 26 cl 3" H 3 1/2" 8 3/4 oz
3545HH	7,8 cm H 9,5 cm 30 cl 3" H 3 3/4" 10 1/4 oz



FUN FACT

Designed in 1963, the 35-series won our first award and continues to be our best seller to this day

More plates



Brem deep plate

8116HH	27 cm H 6 cm 160 cl 10 3/4" H 2 1/4" 54 oz
8117HH	24 cm H 5 cm 110 cl 9 1/2" H 2" 37 1/4 oz
8118HH	20 cm H 4,5 cm 60 cl 7 3/4" H 1 3/4" 20 1/4 oz



Combo deep plate

3152HH	17 cm H 4,5 cm 40 cl 6 3/4" H 1 3/4" 13 1/2 oz
--------	---



Childrens deep plate

0536HH	19 cm H 2,7 cm 16 cl 7 1/2" H 1" 5 1/2 oz
--------	--



TIPS

Figgjo Frame is a modern take on the classic oval plate, providing a more contemporary look for your bistro



Frame plate

6703HH	31 x 23 cm H 1,8 cm 12 1/4" x 9" H 3/4"
6763HH	26,5 x 20,5 cm H 1,8 cm 10 1/2" x 8" H 3/4"
6764HH	22,5 x 17,5 cm H 1,8 cm 8 3/4" x 7" H 3/4"



Combo deep plate

3151HH	14 cm H 4,3 cm 27 cl 5 1/2" H 1 3/4" 9 1/4 oz
--------	--



Mingle reception plate

3170HH	20 x 21,5 cm H 1,5 cm 7 3/4" x 8 1/2" H 1/2"
--------	---



Europa plate

2613HH	32 cm H 1,6 cm 12 1/2" H 3/4"
--------	--------------------------------------



Childrens plate

0535HH	20,5 cm H 3,6 cm 8" H 1 1/2"
--------	-------------------------------------



Cups and mugs



Oslo cup

9060GH	8,5 cm H 6,5 cm 20 cl /Split 3 1/4" H 2 1/2" 6 3/4 oz
--------	--



Oslo cup

9058GH	8,5 cm H 6,5 cm 20 cl /Open 3 1/4" H 2 1/2" 6 3/4 oz
--------	---



Oslo cup

9057GH	8,5 cm H 6,5 cm 20 cl /Tulip 3 1/4" H 2 1/2" 6 3/4 oz
--------	--



Front Dining cup

8059HH	5,8 cm H 5,2 cm 8 cl fits 8059UH 2 1/4" H 2" 2 3/4 oz
--------	--



Front Dining cup

8057HH	7,3 cm H 6,5 cm 18 cl fits 8057UH 2 3/4" H 2 1/2" 6 oz
--------	---



Front Dining cup

8061HH	9,9 cm H 7,6 cm 30 cl fits 8061UH 4" H 3" 10 1/4 oz
--------	--



Base cup

5559HH	5,5 cm H 5,5 cm 8 cl fits 5559UH 2 1/4" H 2 1/4" 2 3/4 oz
5559GH	5,5 cm H 5,5 cm 8 cl w/o handle 2 1/4" H 2 1/4" 2 3/4 oz



Base cup

5558HH	7 cm H 7,1 cm 19 cl fits 5557UH 2 3/4" H 2 3/4" 6 1/2 oz
5558GH	7 cm H 7,1 cm 19 cl w/o handle 2 3/4" H 2 3/4" 6 1/2 oz



Base cup

5561HH	10 cm H 6,5 cm 30 cl fits 5557UH 4" H 2 1/2" 10 1/4 oz
--------	---



Base mug

5541HH	6,8 cm H 8,5 cm 22 cl 2 3/4" H 3 1/4" 7 1/2 oz
--------	---



Base mug

5542HH	7,2 cm H 9,1 cm 26 cl 2 3/4" H 3 1/2" 8 3/4 oz
5542GH	7,2 cm H 9,1 cm 26 cl w/o handle 2 3/4" H 3 1/2" 8 3/4 oz



Verde mug

2541HH	6,4 cm H 10,2 cm 22 cl 2 1/2" H 4" 7 1/2 oz
--------	--

Cups and mugs



Verde mug

2542HH 7,1 cm | H 11,4 cm | 30 cl
2 ¾" | H 4 ½" | 10 ¼ oz



Ting cup

2859HH 6,2 cm | H 6,2 cm | 8 cl
fits 2857UH 2 ½" | H 2 ½" | 2 ¾ oz
2859GH 6,2 cm | H 6,2 cm | 8 cl
w/o handle 2 ½" | H 2 ½" | 2 ¾ oz



Ting cup

2857HH 7,5 cm | H 7,8 cm | 17 cl
fits 2857UH 3" | H 3" | 5 ¾ oz
2857GH 7,5 cm | H 7,8 cm | 17 cl
w/o handle 3" | H 3" | 5 ¾ oz



Ting mug

2842HH 8,2 cm | H 9,8 cm | 28 cl
3 ¼" | H 3 ¾" | 9 ½ oz
2842GH 8,2 cm | H 9,8 cm | 28 cl
w/o handle 3 ¼" | H 3 ¾" | 9 ½ oz



Klassik stacking cup

1858HH 7,5 cm | H 7 cm | 19 cl
fits 1757UH 3" | H 2 ¾" | 6 ½ oz



Klassik cup

1758HH 7,1 cm | H 7 cm | 19 cl
fits 1757UH 2 ¾" | H 2 ¾" | 6 ½ oz



Klassik stacking mug

1841HH 6,8 cm | H 8,4 cm | 22 cl
2 ¾" | H 3 ¼" | 7 ½ oz



Klassik mug

1741HH 6,8 cm | H 8,6 cm | 22 cl
2 ¾" | H 3 ½" | 7 ½ oz



Klassik mug

1742HH 7,2 cm | H 9,1 cm | 26 cl
2 ¾" | H 3 ½" | 8 ¾ oz



35-series stacking cup

3557HH 7,4 cm | H 6 cm | 15 cl
fits 3557UH 3" | H 2 ¼" | 5 oz



35-series stacking cup

3560HH 7,5 cm | H 7,6 cm | 22 cl
fits 3560UH 3" | H 3" | 7 ½ oz



35-series stacking cup

3561HH 8,5 cm | H 6,4 cm | 22 cl
fits 3561UH 3 ¼" | H 2 ½" | 7 ½ oz

Cups and mugs



35-series stacking mug

3542HH 7,6 cm | H 8,6 cm | 26 cl
3" | H 3 ½" | 8 ¾ oz



35-series stacking mug

3545HH 7,8 cm | H 9,5 cm | 30 cl
3" | H 3 ¾" | 10 ¼ oz



24-series cup

2441HH 8,1 cm | H 6,8 cm | 22 cl
fits 1757UH 3 ¼" | H 2 ¾" | 7 ½ oz
2441GH 8,1 cm | H 6,8 cm | 22 cl
w/o handle 3 ¼" | H 2 ¾" | 7 ½ oz



1200-series cup

1259HH 7,1 cm | H 4,7 cm | 10 cl
fits 1259UH 2 ¾" | H 1 ¾" | 3 ½ oz



1200-series cup

1260HH 9,7 cm | H 5,9 cm | 22 cl
fits 1260UH 3 ¾" | H 2 ¼" | 7 ½ oz
1260GH 9,7 cm | H 5,9 cm | 22 cl
w/o handle 3 ¾" | H 2 ¼" | 7 ½ oz



1200-series cup

1261HH 10,7 cm | H 6,6 cm | 30 cl
fits 1260UH 4 ¼" | H 2 ½" | 10 ¼ oz



1200-series cup

1262HH 12 cm | H 8 cm | 45 cl
fits 1260UH 4 ¾" | H 3 ¼" | 15 ¼ oz



1000-series cup

1059HH 6,5 cm | H 4,8 cm | 10 cl
fits 1059UH 2 ½" | H 2" | 3 ½ oz



1000-series cup

1057HH 8,1 cm | H 6 cm | 18 cl
fits 1057UH 3 ¼" | H 2 ¼" | 6 oz



1000-series cup

1060HH 9 cm | H 6,9 cm | 23 cl
fits 1057UH 3 ½" | H 2 ¾" | 7 ¾ oz



1000-series cup

1061HH 9,5 cm | H 7 cm | 28 cl
fits 1061UH 3 ¾" | H 2 ¾" | 9 ½ oz



1000-series cup

1058HH 7 cm | H 7,6 cm | 16 cl
fits 1059UH 2 ¾" | H 3" | 5 ½ oz

Cups and mugs



1100-series stacking cup/-mug

1160HH 7,5 cm | H 8 cm | 24 cl
fits 1160UH 3" | H 3 1/4" | 8 oz



Stacking mug

1542HH 7 cm | H 10,7 cm | 26 cl
2 3/4" | H 4 1/4" | 8 3/4 oz



Stacking mug

1541HH 6,5 cm | H 9,7 cm | 22 cl
2 1/2" | H 3 3/4" | 7 1/2 oz



30-series mug

3041HH 6,7 cm | H 9 cm | 22 cl
2 3/4" | H 3 1/2" | 7 1/2 oz



30-series mug

3042HH 7,6 cm | H 9,8 cm | 28 cl
3" | H 3 3/4" | 9 1/2 oz



30-series mug

3040HH 8,8 cm | H 9 cm | 40 cl
3 1/2" | H 3 1/2" | 13 1/2 oz



1000-series mug

1041HH 7,5 cm | H 9,7 cm | 22 cl
3" | H 3 3/4" | 7 1/2 oz



Stacking mug

1641HH 6,9 cm | H 9,3 cm | 22 cl
2 3/4" | H 3 3/4" | 7 1/2 oz



Childrens mug

0537HH 7,4 cm | H 7,5 cm | 20 cl
3" | H 3" | 6 3/4 oz



TIPS

Mugs are a great option for branding. Adding your company logo can improve your marketing efforts

Saucers



Front Dining saucer

8059UH 12,5 cm | H 2 cm
5" | H 3/4"



Front Dining saucer

8057UH 14,5 cm | H 2,1 cm
5 3/4" | H 3/4"



Front Dining saucer

8061UH 16 cm | H 2,1 cm
6 1/4" | H 3/4"



Base saucer

5559UH 13 cm | H 2 cm
5" | H 3/4"



Base saucer

5557UH 14,5 cm | H 2,2 cm
5 3/4" | H 3/4"



Base saucer

3021UH 17 cm | H 2,1 cm
6 3/4" | H 3/4"



Klassik saucer

1757UH 14,5 cm | H 1,8 cm
5 3/4" | H 3/4"



1200-series saucer

1259UH 12,5 cm | H 1,6 cm
5" | H 3/4"



1200-series saucer

1260UH 14,5 cm | H 2 cm
5 3/4" | H 3/4"



35-series saucer

3561UH 14 cm | H 1,8 cm
5 1/2" | H 3/4"



35-series saucer

3557UH 12,5 cm | H 1,8 cm
5" | H 3/4"



35-series saucer

3560UH 14,5 cm | H 1,9 cm
5 3/4" | H 3/4"

Saucers



1000-series saucer/plate

1059UH 12,5 cm | H 1 cm
5" | H 1/2"



1000-series saucer/plate

1057UH 14,5 cm | H 1,5 cm
5 3/4" | H 1/2"



1000-series saucer/plate

1061UH 16 cm | H 1,5 cm
6 1/4" | H 1/2"



Ting saucer

2857UH 12,5 cm | H 3,3 cm
5" | H 1 1/4"



900-series saucer

0957UH 14,5 cm | H 2,5 cm
optional 5 3/4" | H 1"



1100-series saucer

1160UH 14,5 cm | H 2,5 cm
5 3/4" | H 1"



Bris saucer/plate

3759UH 12,5 cm | H 1 cm
5" | H 1/2"



Bris saucer/plate

3757UH 14,5 cm | H 1,5 cm
5 3/4" | H 1/2"



Bris saucer/plate

3761UH 16 cm | H 1,5 cm
6 1/4" | H 1/2"



FUN FACT

Our saucers are compatible with various cups and mugs. We're here to help you choose the perfect combination

Serving trays and bowls



Fri tray

1110HH 50 x 40 cm | H 2,7 cm | 250 cl
/Large 19 3/4" x 15 3/4" | H 1" | 84 1/2 oz



Fri tray

1111HH 40 x 30 cm | H 2,7 cm | 150 cl
/Large 15 3/4" x 11 3/4" | H 1" | 50 3/4 oz



Fri tray/plate

1112HH 30 x 23 cm | H 2,7 cm | 100 cl
/Large 11 3/4" x 9" | H 1" | 33 3/4 oz



Tri tray

3310HH 42 x 40 cm | H 6 cm | 540 cl
/Large 16 1/2" x 15 3/4" | H 2 1/4" | 182 1/2 oz



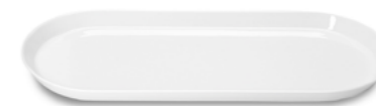
Tri tray

3312HH 34 x 32,5 cm | H 5 cm | 286 cl
/Large 13 1/2" x 12 3/4" | H 2" | 96 3/4 oz



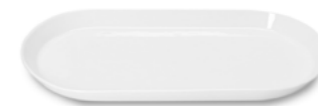
Tri tray/plate

3314HH 26 x 25 cm | H 4 cm | 128 cl
10 1/4" x 9 3/4" | H 1 1/2" | 43 1/4 oz



Arena form low

1627HH 53 x 22 cm | H 2,7 cm
/Large 20 3/4" x 8 3/4" | H 1"



Arena form low

1626HH 40 x 20 cm | H 2,7 cm
/Large 15 3/4" x 7 3/4" | H 1"



Arena form low

1625HH 26,5 x 16 cm | H 2,7 cm
10 1/2" x 6 1/4" | H 1"



Arena form

1640HH 40 x 20 cm | H 10 cm | 450 cl
/Large 15 3/4" x 7 3/4" | H 4" | 152 1/4 oz



Arena form

1638HH 32,5 x 16 cm | H 6 cm | 180 cl
/Large 12 3/4" x 6 1/4" | H 2 1/4" | 60 3/4 oz



Arena form

1637HH 26,5 x 16 cm | H 6 cm | 140 cl
/Large 10 1/2" x 6 1/4" | H 2 1/4" | 47 1/4 oz

Serving trays and bowls



Arena form

1630HH 21 x 11,5 cm | H 5,5 cm | 70 cl
8 ¼" x 4 ½" | H 2 ¼" | 23 ¾ oz



Arena form

1636HH 16 x 10 cm | H 5 cm | 40 cl
6 ¼" x 4" | H 2" | 13 ½ oz



Arena form

1635HH 12,5 x 7,6 cm | H 4,6 cm | 18 cl
5" x 3" | H 1 ¾" | 6 oz



Arena Spiss form

1633HH 17,7 x 10 cm | H 5 cm | 30 cl
7" x 4" | H 2" | 10 ¼ oz



Arena Spiss form

1634HH 13 x 7,5 cm | H 4,5 cm | 10 cl
5" x 3" | H 1 ¾" | 3 ½ oz



Klassik sugar bowl

1759GH 7,5 cm | H 5 cm | 12 cl
3" | H 2" | 4 oz



Klassik bowl

1719HH 12 cm | H 6,2 cm | 50 cl
4 ¾" | H 2 ½" | 17 oz



Klassik bowl

1718HH 17,5 cm | H 7,4 cm | 140 cl
7" | H 3" | 47 ¼ oz



Klassik bowl

1717HH 22,5 cm | H 9 cm | 280 cl
8 ¾" | H 3 ½" | 94 ¾ oz



Klassik tray high edge

1710HH 40 cm | H 5 cm | 450 cl
15 ¾" | H 2" | 152 ¼ oz



Klassik tray high edge

1711HH 35 cm | H 6,4 cm | 450 cl
13 ¾" | H 2 ½" | 152 ¼ oz



Klassik bowl

1712HH 30 cm | H 7,2 cm | 380 cl
11 ¾" | H 2 ¾" | 128 ½ oz

Serving trays and bowls



Boks bowl

4033HH 53 x 16 cm | H 6 cm | 300 cl
/Large 20 ¾" x 6 ¼" | H 2 ¼" | 101 ½ oz



Boks bowl

4038HH 11 x 44 cm | H 6 cm | 200 cl
/Large 4 ¼" x 17 ¼" | H 2 ¼" | 67 ¾ oz



Boks bowl

4039HH 22 x 22 cm | H 8,8 cm | 250 cl
/Large 8 ¾" x 8 ¾" | H 3 ½" | 84 ½ oz



Boks bowl

4036HH 11 x 11 cm | H 6 cm | 44 cl
4 ¼" x 4 ¼" | H 2 ¼" | 15 oz



Boks bowl

4037HH 11 x 22 cm | H 6 cm | 92 cl
4 ¼" x 8 ¾" | H 2 ¼" | 31 oz



Boks bowl

4035HH 11 x 7,2 cm | H 6 cm | 28 cl
4 ¼" x 2 ¾" | H 2 ¼" | 9 ½ oz



1000-series jar/bowl

1081HH 19,3 cm | H 14,3 cm | 300 cl
/Large 7 ½" | H 5 ¾" | 101 ½ oz



1000-series jar/bowl

1082HH 16,9 cm | H 13 cm | 200 cl
/Large 6 ¾" | H 5" | 67 ¾ oz



1000-series jar/bowl

1083HH 13,8 cm | H 10,3 cm | 100 cl
/Large 5 ½" | H 4" | 33 ¾ oz



1000-series jar/bowl

1084HH 11,1 cm | H 8,4 cm | 50 cl
4 ¼" | H 3 ¼" | 17 oz



1000-series bowl

1061GH 9,5 cm | H 7 cm | 28 cl
3 ¾" | H 2 ¾" | 9 ½ oz
1060GH 9 cm | H 6,9 cm | 23 cl
3 ½" | H 2 ¾" | 7 ¾ oz



1000-series bowl

1057GH 8,1 cm | H 6 cm | 18 cl
3 ¼" | H 2 ¼" | 6 oz
1059GH 6,5 cm | H 4,8 cm | 10 cl
2 ½" | H 2" | 3 ½ oz

Serving trays and bowls



Stacking bowl

1800HH 40 cm | H 10 cm | 820 cl
/Large 15 3/4" | H 4" | 277 1/4 oz



Stacking bowl

1814HH 35,5 cm | H 10,5 cm | 600 cl
/Large 14" | H 4 1/4" | 203 oz
1816HH 27,5 cm | H 9,4 cm | 330 cl
/Large 10 3/4" | H 3 3/4" | 111 1/2 oz



Stacking bowl

1817HH 24 cm | H 8,8 cm | 230 cl
/Large 9 1/2" | H 3 1/2" | 77 3/4 oz
1818HH 21 cm | H 8,2 cm | 150 cl
8 1/4" | H 3 1/4" | 50 3/4 oz



Stacking bowl

1819HH 17 cm | H 7,5 cm | 80 cl
6 3/4" | H 3" | 27 oz
1820HH 14,5 cm | H 6,5 cm | 50 cl
5 3/4" | H 2 1/2" | 17 oz



Stacking bowl

1821HH 12 cm | H 5 cm | 28 cl
4 3/4" | H 2" | 9 1/2 oz
1822HH 10 cm | H 4,5 cm | 18 cl
4" | H 1 3/4" | 6 oz



Stacking bowl

1823HH 8 cm | H 3,6 cm | 8 cl
3 1/4" | H 1 1/2" | 2 3/4 oz
1824HH 6 cm | H 2,2 cm | 3 cl
2 1/4" | H 3/4" | 1 oz



Jar

1782HH 16 cm | H 14,4 cm | 200 cl
/Large 6 1/4" | H 5 3/4" | 67 3/4 oz



Jar

1783HH 12,8 cm | H 11,5 cm | 100 cl
/Large 5" | H 4 1/2" | 33 3/4 oz



Jar

1784HH 10,5 cm | H 9 cm | 50 cl
4 1/4" | H 3 1/2" | 17 oz



Kule bowl

1556HH 25,5 cm | H 14 cm | 500 cl
/Large 10" | H 5 1/2" | 169 oz



Kule bowl

1554HH 21 cm | H 11,5 cm | 280 cl
/Large 8 1/4" | H 4 1/2" | 94 3/4 oz



Kule bowl

1552HH 16 cm | H 9 cm | 120 cl
/Large 6 1/4" | H 3 1/2" | 40 1/2 oz

Bowls and accessories



Europa bowl

2617HH 22,5 cm | H 8,6 cm | 200 cl
/Large 8 3/4" | H 3 1/2" | 67 3/4 oz



Europa bowl

2618HH 18,5 cm | H 7,5 cm | 110 cl
7 1/4" | H 3" | 37 1/4 oz



Europa bowl

2619HH 14 cm | H 7 cm | 50 cl
5 1/2" | H 2 3/4" | 17 oz
2661GH 11,5 cm | H 5,6 cm | 30 cl
4 1/2" | H 2 1/4" | 10 1/4 oz



System stacking bowl

3122HH 13,2 cm | H 6,4 cm | 50 cl
5 1/4" | H 2 1/2" | 17 oz



Combo bowl

1518HH 12 cm | H 8 cm | 45 cl
4 3/4" | H 3 1/4" | 15 1/4 oz



Combo bowl

1519HH 13,5 cm | H 8,4 cm | 65 cl
5 1/4" | H 3 1/4" | 22 oz



35-series sugar bowl

3588HH 8 cm | H 4,5 cm | 15 cl
3 1/4" | H 1 3/4" | 5 oz



45-series sugar bowl

4588HH 9 cm | H 4,7 cm | 15 cl
3 1/2" | H 1 3/4" | 5 oz



45-series lid for 4588hh

4588LH 9 cm | H 3,6 cm
/Lid 3 1/2" | H 1 1/2"



35-series egg cup

3580HH 4,8 cm | H 4,2 cm | 4 cl
2" | H 1 3/4" | 1 1/4 oz



Klassik egg cup

1380HH 5,2 cm | H 4,2 cm | 4 cl
2" | H 1 3/4" | 1 1/4 oz



Base egg cup

2180HH 12,3 cm | H 1,5 cm
4 3/4" | H 1/2"

Accessories



15-series jug

1575HH 20 x 11,5 cm | H 20 cm | 120 cl
/Large 7 3/4" x 4 1/2" | H 7 3/4" | 40 1/2 oz

1576HH 16 x 10 cm | H 16 cm | 70 cl
/Large 6 1/4" x 4" | H 6 1/4" | 23 3/4 oz



15-series cream jug

1593GH 10 X 7,5 cm | H 12,4 cm | 30 cl
4" x 3" | H 5" | 10 1/4 oz



15-series cream jug

1594GH 8,5 X 6,5 cm | H 8,6 cm | 15 cl
3 1/4" x 2 1/2" | H 3 1/2" | 5 oz

1595GH 7 x 5,4 cm | H 6,1 cm | 8 cl
2 3/4" x 2 1/4" | H 2 1/2" | 2 3/4 oz



45-series jug high

4585HH 18,2 x 9,7 cm | H 17,8 cm | 70 cl
/Large 7 1/4" x 3 3/4" | H 7" | 23 3/4 oz

4586HH 16,5 x 8,2 cm | H 15,8 cm | 45 cl
/Large 6 1/2" x 3 1/4" | H 6 1/4" | 15 1/4 oz



45-series jug low

4585CH 19,8 x 11,2 cm | H 13,1 cm | 70 cl
/Large 7 3/4" x 4 1/2" | H 5 1/4" | 23 3/4 oz

4586CH 17,2 x 9,4 cm | H 11,6 cm | 45 cl
/Large 6 3/4" x 3 3/4" | H 4 1/2" | 15 1/4 oz



45-series lid for 4585hh/4585ch

4585LH 7 cm | H 3,6 cm
/Lid 2 3/4" | H 1 1/2"

4586LH 5,9 cm | H 3,4 cm
/Lid 2 1/4" | H 1 1/4"



35-series jug

3575HH 13 cm | H 18 cm | 120 cl
/Large 5" | H 7" | 40 1/2 oz



45-series cream jug

4593HH 13,6 x 7,4 cm | H 9 cm | 25 cl
5 1/4" x 3" | H 3 1/2" | 8 1/2 oz

4594HH 10,9 x 5,6 cm | H 9 cm | 10 cl
4 1/4" x 2 1/4" | H 3 1/2" | 3 1/2 oz



45-series cream jug w/o handle

4594GH 7,5 x 5,6 cm | H 9 cm | 10 cl
3" x 2 1/4" | H 3 1/2" | 3 1/2 oz



45-series gravy boat

4509HH 9,6 x 19,5 cm | H 7,5 cm | 50 cl
3 3/4" x 7 3/4" | H 3" | 17 oz

4509UH 22,5 x 18 cm | H 2,1 cm
/Saucer 8 3/4" x 7" | H 3/4"



Salt and pepper

4008HH 3,2 x 3,2 cm | H 8,4 cm
/Salt 1 1/4" x 1 1/4" | H 3 1/4"

4009HH 3,2 x 3,2 cm | H 8,4 cm
/Pepper 1 1/4" x 1 1/4" | H 3 1/4"



Toothpick holder

4034HH 3,2 x 3,2 cm | H 5,4 cm | 3 cl
/Square 1 1/4" x 1 1/4" | H 2 1/4" | 1 oz

3534HH 3,4 cm | H 4,7 cm | 3 cl
/Round 1 1/4" | H 1 3/4" | 1 oz

Gastronorm



Gastronorm tray 1/1 low

5710HH 53 x 32,5 cm | H 4 cm | 300 cl
/Large 20 3/4" x 12 3/4" | H 1 1/2" | 101 1/2 oz

5712HH 53 x 16 cm | H 4 cm | 150 cl
/Large 20 3/4" x 6 1/4" | H 1 1/2" | 50 3/4 oz



GN tray 1/1

2117HH 53 x 32,3 cm | H 1,8 cm
/Large 20 3/4" x 12 3/4" | H 3/4"

2116HH 53 x 16 cm | H 1,8 cm
/Large 20 3/4" x 6 1/4" | H 3/4"



GN tray/plate 2/3

2115HH 35,5 x 32,5 cm | H 1,9 cm
/Large 14" x 12 3/4" | H 3/4"



Gastronorm tray 1/2 deep

5709HH 32,5 x 26 cm | H 10 cm | 500 cl
/Large 12 3/4" x 10 1/4" | H 4" | 169 oz

5706HH 32,5 x 26 cm | H 6 cm | 260 cl
/Large 12 3/4" x 10 1/4" | H 2 1/4" | 88 oz

5701HH 32,5 x 26 cm | H 3 cm | 100 cl
/Large 12 3/4" x 10 1/4" | H 1 1/4" | 33 3/4 oz



GN plate 1/2

2114HH 32,5 x 26 cm | H 1,9 cm
/Large 12 3/4" x 10 1/4" | H 3/4"

2113HH 32,5 x 17 cm | H 1,9 cm
/Large 12 3/4" x 6 3/4" | H 3/4"



Gastronorm tray 1/3 high

5707HH 32,5 x 17 cm | H 6 cm | 150 cl
/Large 12 3/4" x 6 3/4" | H 2 1/4" | 50 3/4 oz

5702HH 32,5 x 17 cm | H 3 cm | 60 cl
/Large 12 3/4" x 6 3/4" | H 1 1/4" | 20 1/4 oz



Gastronorm tray 1/6 deep

5715HH 16,3 x 17 cm | H 10 cm | 130 cl
6 1/2" x 6 3/4" | H 4" | 44 oz

5714HH 16,3 x 17 cm | H 5,5 cm | 70 cl
6 1/2" x 6 3/4" | H 2 1/4" | 23 3/4 oz



Gastronorm tray 1/4 low

2154HH 26 x 16 cm | H 1,8 cm
10 1/4" x 6 1/4" | H 3/4"



Gastronorm tray 1/8 low

2150HH 15 x 12 cm | H 1,5 cm
6" x 4 3/4" | H 1/2"



Gastronorm tray 1/16 high

2153HH 12,2 x 7,5 cm | H 3 cm
4 3/4" x 3" | H 1 1/4"



Gastronorm tray 1/16 low

2151HH 12,2 x 7,5 cm | H 1,5 cm
4 3/4" x 3" | H 1/2"



Gastronorm tray 1/32 low

2152HH 6,5 x 6,5 cm | H 1,4 cm
2 1/2" x 2 1/2" | H 1/2"



Tilt – a rock-solid collection



Tilt bowl

SW0018 15,5 cm | H 6 cm | 70 cl
6" | H 2 1/4" | 23 3/4 oz



Tilt bowl

SW0020 10,5 cm | H 5,5 cm | 25 cl
4 1/4" | H 2 1/4" | 8 1/2 oz



Tilt bowl

SW0021 8,5 cm | H 5 cm | 15 cl
3 1/4" | H 2" | 5 oz



Tilt plate

SW0063 20 cm | H 2,5 cm
7 3/4" | H 1"



Tilt plate

SW0065 15 cm | H 2 cm
6" | H 3/4"



Tilt jug

SW0093 10,5 x 7,5 cm | H 11 cm | 30 cl
4 1/4" x 3" | H 4 1/4" | 10 1/4 oz



Tilt jug

SW0094 6,3 x 5,8 cm | H 8,6 cm | 15 cl
2 1/2" x 2 1/4" | H 3 1/2" | 5 oz



SUSTAINABILITY

Eco-Gres® is a new type of clay made from 90 % recycled materials, making it completely eco-friendly

The Tilt collection has a semi-matte black glaze on the interior and a raw exterior, beautifully complementing our white high-quality porcelain.

This 100 % eco-friendly clay is crafted into seven stylish black tabletop accessories, enhancing your ability to express personal style. With beautiful stoneware inside and out, the Tilt collection is both elegant and sustainable.

Meet our spray decors:

Each product that is decorated using spray techniques has a unique and stunning appearance, thanks to the various methods and settings applied with the airbrush spray tool.

Our talented artisans have perfected their skills through years of dedicated training, bringing these products to life. Some specialize in the stunning Skygge decor, while others have mastered the impressive Flom technique, making each piece one-of-a-kind.



Skygge

– available in 60 different colors



Base plate Skygge 8x09

Figgjo Skygge features a beautiful spray of color, transitioning from light to dark on the same plate. This unique shadow-inspired design interacts elegantly with the food, creating an engaging dining experience.



Pax plate Skygge 1x18



In stock



7x11

Are you interested in stocked options with immediate delivery? The Skygge decor is stocked in brown on the Figgjo Base collection and selected large items.

For full decor options, see our decor listing on page 80.

Ela

– available in three colorways



Furo plate Ela 7x11

The Ela decor is decorated with drops of paint and a careful scatter of color to give the products a slight roughness compared to the regular spray decor. A soft color palette is offered in the three colorways available. Think of sandy beaches, unripe olives and sunsets.



Frame plate Ela 5x01



In stock



Are you interested in stocked options with immediate delivery? The Ela decor is stocked brown, olive and pink on selected Figgjo Base items.

For full decor options, see our decor listing on page 80.

Spray

– available in 60 different colors



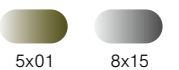
Furo plate Spray 7x11 and Base bowl Spray 1x21

The Spray decor is a full-cover color spray that can change the look and feel of an item. Choose your favorite color to match your concept.



Staking bowls Spray 5x10 and 1x18

In stock



Are you interested in stocked options with immediate delivery? The Spray decor is stocked in 5x01 on the Figgjo Pax collection and in 8x15 selected large items.

For full decor options, see our decor listing on page 80.



Dryss

– available in 60 different colors



Tea pot Dryss 7x11

The Dryss decor features a careful scatter of color that adds a subtle roughness to the products. This decor is highly versatile and can be easily incorporated into various tabletop designs, providing a charming detail that creates a natural and casual base, while allowing the food to remain the focal point.



Oslo Open cup Dryss 8x10



In stock



Are you interested in stocked options with immediate delivery? The Dryss decor is stocked in brown on selected Figgjo Base items.

For full decor options, see our decor listing on page 80.

360

– available in 60 different colors



Wok deep plate 360 2x02

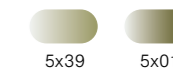
The 360 decor showcases a beautiful gradient that transitions from light to dark across its surface. This design creates an organic look, drawing the eye towards the center of the plate and enhancing the appeal of every dish.



Bris deep plate 360 3x21



In stock



Are you interested in stocked options with immediate delivery? The 360 decor is stocked in 5x39 on Figgjo Brem plates and in 5x01 selected large items.

For full decor options, see our decor listing on page 80.

Flom

– available in limited colors



Figgjo Flom translates to "flood" and features a natural, fluid design. This artistic decor technique is unique to Figgjo and highlights the Scandinavian design style.

Since the decor is applied by hand, each plate varies from one another, celebrating the beauty of nature. These plates are genuine works of art.

Base plates Flom 8x15, 2x02 and 7x11



Base plate Flom 5x39 and 5x10



In stock



7x11

Are you interested in stocked options with immediate delivery? The Flom decor is stocked in brown on selected Figgjo Base plates.

For full decor options, see our decor listing on page 80.

Fade

– available in three colorways



Pax plate Fade 7x18–1x19 (rose)

Fade explores different emotions and stories through a plate series of two-colour combinations. Shades of red, blue, and brown rooted in nature and food, encouraging a joyous and optimistic vibe around the table. Colors that are manifesting as stand-out statements; bold, full of wit and inclusive of all.



Pax plates Fade beige, rose and blue

Availability



7x18-1x19 3x21-3x44 7x15-7x09

Are you interested in this decor? The Fade decor is available in blue, beige and rose on most flat plates.



Meet our brush decors:

The traditional brush technique in porcelain manufacturing is a captivating art form refined by only the most dedicated artisans. The years of training and commitment required to master each brushstroke are truly inspiring.

If you haven't experienced it firsthand, it can be difficult to understand the skill involved. Our artisans use various brushes to create intricate stripes and swirls. This technique ensures that each piece is unique, reflecting the individual touch of its creator. It is a beautiful blend of artistry and dedication.



Motti

– available in 60 different colors



Ting deep plate Motti 3x21

Motti is a hand-painted decor technique that features beautiful circular lines, resulting in a fully covered spinning surface. Color is applied using a sponge brush while the plate rotates on a turntable.

This traditional technique respects the authenticity of round plates while joyfully enhancing the food served on them.



Furo plate Motti 3x25 and 7x09



In stock

7x15

Are you interested in stocked options with immediate delivery? The Motti decor is stocked in beige on Figgjo Ting plates.

For full decor options, see our decor listing on page 80.

Strøk

– available in 60 different colors



Furo plates Strøk 7x09 and 5x01

The Strøk decor features a clean, hand-painted edge that creates a sturdy frame for the food. This classic design is one of our most popular choices. It offers an honest, down-to-earth feel while ensuring that the food remains the main focus.



Base plate Strøk 8x09



In stock



7x11

Are you interested in stocked options with immediate delivery? The Strøk decor is stocked in brown on Figgjo Base collection.

For full decor options, see our decor listing on page 80.

Streif

– available in 60 different colors



Front Dining Streif Platinum

The Streif decor is a more elegant version of the Strøk decor, highlighting the porcelain in a sophisticated way. The thin stripe is applied by hand and is popular in gold or platinum.



Europa bowl and Base plates Streif 8x10



Availability

Are you interested in this decor? The Streif decor is not stocked but is made to order with 4-6 weeks lead time.

For full decor options, see our decor listing on page 80.

Rustikk Strøk

– available in 60 different colors



Klassik tray and Stacking bowl Rustikk Strøk 5x01

The Rustikk Strøk decor features a rough, rustic edge applied with a sponge, while the solid Strøk uses a traditional brush. This decor is compatible with most of our products, including square shapes.



Base plates Rustikk Strøk 7x18 and 5x01



In stock



5x01

Are you interested in stocked options with immediate delivery? The Rustikk Strøk decor is stocked in olive on selected large items.

For full decor options, see our decor listing on page 80.

Sirkel

– available in 60 different colors



Grad plate Sirkel 7x09

The Sirkel decor features a simple stripe. This hand-painted decor provides the product with a fresh expression. It is timeless and can be easily combined with other Figgjo decors.



24 plate and Klassik cup Sirkel 7x09



In stock



8x10

Are you interested in stocked options with immediate delivery? The Sirkel decor is stocked in color black on Figgjo 24-plates + Klassik cups and saucers.

For full decor options, see our decor listing on page 80.

Mono

– available in 60 different colors



Brem deep plate Mono 7x18

The Mono decor elevates the dining experience with its vibrant and uplifting aesthetic. Each plate features beautiful hand-painted brush strokes, skillfully applied using a turntable for precision. Multiple brushes are employed to create distinct elements of the design, including the beginning, middle, and end of the decor.



Grad deep plate Mono 8x09



In stock



7x09

Are you interested in stocked options with immediate delivery? The Mono decor is stocked in dark old gold on Figgjo 35-plates and 15-mugs.

For full decor options, see our decor listing on page 80.

Duo

– available in 60 different colors



Klassik plate Duo 1x22 + 1x27

The Duo decor is an extension of Mono, featuring an additional stripe outside the main brush stroke. Each plate is framed by hand using a traditional technique applied with a turntable. Up to three different brushes are used to achieve this unique look and feel. Most rimmed plates complement the Duo decor beautifully.



Grad plate Duo 3x21+3x44



In stock



7x15+7x09

Are you interested in stocked options with immediate delivery? The Duo decor is stocked in beige on Figgjo Klassik plates.

For full decor options, see our decor listing on page 80.

Meet our printers:

At Figgjo, we operate our own silk screen printing shop. We produce both the screens and colors in-house, allowing us to collaborate with our designers to create patterns and graphics that match your preferred style.

Having everything under one roof simplifies our logistics, providing greater flexibility for our customers. This results in lower minimum order quantities and shorter lead times.



Decal

– available in 100+ colors



Grade plate with decal print

With full control over the paint, printing, and quality, we ensure that our customers receive the best and most highly detailed personalization possible. Everything is done by hand, double-checked, and tested in our own laboratory. All our decals are “in-glaze” for premium quality.



Highly detailed decal print



Custom branding

All our products can be customized to fit your branding. Choose from 300 shapes and make it your own. Combine decal printing with traditional brush and spray decor to maximize our possibilities.



Decor list

	Skygge Stocked ● 7x11	Ela Stocked ● 7x18 ● 5x01 ● 7x11	Spray Stocked ● 5x01 (buffet ● 8x15)	Strøk Stocked ● 7x11	Streif Not stocked	Rustikk Strøk Stocked ● 5x01	Dryss Stocked ● 7x11	360 Stocked ● 5x39 (buffet ● 8x01)	Motti Stocked ● 7x15	Flom Stocked ● 7x11	Duo Stocked ● 7x15 - 7x09	Mono Stocked ● 7x09	Sirkel Stocked ● 8x10	Fade Not stocked
9004HH	Aura plate	●	●	●	●	●	●	●	●	●	●	●	●	●
9063HH	Aura plate	●	●	●	●	●	●	●	●	●	●	●	●	●
9086HH	Oslo jug	●	●	●	●	●	●	●	●	●	●	●	●	●
9086LH	Oslo lid	●	●	●	●	●	●	●	●	●	●	●	●	●
9060GH	Oslo Split cup	●	●	●	●	●	●	●	●	●	●	●	●	●
9058GH	Oslo Open cup	●	●	●	●	●	●	●	●	●	●	●	●	●
9057GH	Oslo Tulip cup	●	●	●	●	●	●	●	●	●	●	●	●	●
4021HH	Sylinder bowl	●	●	●	●	●	●	●	●	●	●	●	●	●
4022HH	Sylinder bowl	●	●	●	●	●	●	●	●	●	●	●	●	●
4023HH	Sylinder bowl	●	●	●	●	●	●	●	●	●	●	●	●	●
4021CH	Podie tray/plate	●	●	●	●	●	●	●	●	●	●	●	●	●
4022CH	Podie tray/plate	●	●	●	●	●	●	●	●	●	●	●	●	●
4023CH	Podie tray/plate	●	●	●	●	●	●	●	●	●	●	●	●	●
7084HH	Pisa bowl	●	●	●	●	●	●	●	●	●	●	●	●	●
7084LH	Pisa lid/plate	●	●	●	●	●	●	●	●	●	●	●	●	●
7088HH	Pisa bowl	●	●	●	●	●	●	●	●	●	●	●	●	●
7088LH	Pisa lid/plate	●	●	●	●	●	●	●	●	●	●	●	●	●
9015HH	Svai bowl /Large	●	●	●	●	●	●	●	●	●	●	●	●	●
9017HH	Svai bowl /Large	●	●	●	●	●	●	●	●	●	●	●	●	●
9018HH	Svai bowl/deep plate	●	●	●	●	●	●	●	●	●	●	●	●	●
9022HH	Plattform tray/plate /Large	●	●	●	●	●	●	●	●	●	●	●	●	●
9020HH	Plattform tray	●	●	●	●	●	●	●	●	●	●	●	●	●
9014HH	Hval tray /Large	●	●	●	●	●	●	●	●	●	●	●	●	●
8013HH	Front Dining plate	●	●	●	●	●	●	●	●	●	●	●	●	●
8004HH	Front Dining plate	●	●	●	●	●	●	●	●	●	●	●	●	●
8005CH	Front Dining plate w/o rim	●	●	●	●	●	●	●	●	●	●	●	●	●
8063CH	Front Dining plate w/o rim	●	●	●	●	●	●	●	●	●	●	●	●	●
8065CH	Front Dining plate w/o rim	●	●	●	●	●	●	●	●	●	●	●	●	●
8008HH	Front Dining deep plate	●	●	●	●	●	●	●	●	●	●	●	●	●
8007HH	Front Dining deep plate	●	●	●	●	●	●	●	●	●	●	●	●	●
8005HH	Front Dining plate wide rim	●	●	●	●	●	●	●	●	●	●	●	●	●
8059HH	Front Dining cup	●	●	●	●	●	●	●	●	●	●	●	●	●
8059UH	Front Dining saucer	●	●	●	●	●	●	●	●	●	●	●	●	●
8057HH	Front Dining cup	●	●	●	●	●	●	●	●	●	●	●	●	●
8057UH	Front Dining saucer	●	●	●	●	●	●	●	●	●	●	●	●	●
8061HH	Front Dining cup	●	●	●	●	●	●	●	●	●	●	●	●	●
8061UH	Front Dining saucer	●	●	●	●	●	●	●	●	●	●	●	●	●
2105HH	Base plate	●	○	●	○	●	○	●	○	●	○	●	○	●
5504HH	Base plate	●	○	●	○	●	○	●	○	●	○	●	○	●
5502HH	Base plate	●	○	●	○	●	○	●	○	●	○	●	○	●
5563HH	Base plate	●	○	●	○	●	○	●	○	●	○	●	○	●
5565HH	Base plate	●	○	●	○	●	○	●	○	●	○	●	○	●
5518HH	Base plate high edge	●	○	●	○	●	○	●	○	●	○	●	○	●
5520HH	Base plate high edge	●	○	●	○	●	○	●	○	●	○	●	○	●
5517HH	Base plate high edge	●	○	●	○	●	○	●	○	●	○	●	○	●
5510HH	Base plate semi deep	●	○	●	○	●	○	●	○	●	○	●	○	●

Decor list

	Skylgje Stocked 7x11	Eila Stocked 7x18 5x01 7x11	Spray Stocked 5x01 (Buffer 8x15)	Strök Stocked 7x11	Streif Not stocked	Rustikk Strök Stocked 5x01	Dryss Stocked 7x11	360 Stocked 5x39 (Buffer 5x01)	Motti Stocked 7x15	Flom Stocked 7x11	Duo Stocked 7x15 + 7x09	Mono Stocked 7x09	Sirkel Stocked 8x10	Fade Not stocked
5507HH	Base bowl deep	●	○	●	○	●	○	●	○	●	○	●	○	●
5506HH	Base bowl deep	●	○	●	○	●	○	●	○	●	○	●	○	●
5504CH	Base plate w/ handle	●	○	●	○	●	○	●	○	●	○	●	○	●
5516CH	Base plate high edge w/ handle	●	○	●	○	●	○	●	○	●	○	●	○	●
5554CH	Base plate w/ handle	●	○	●	○	●	○	●	○	●	○	●	○	●
5550CH	Base plate w/ handle	●	○	●	○	●	○	●	○	●	○	●	○	●
5522HH	Base bowl	●	○	●	○	●	○	●	○	●	○	●	○	●
5523HH	Base bowl	●	○	●	○	●	○	●	○	●	○	●	○	●
5559HH	Base cup	●	○	●	○	●	○	●	○	●	○	●	○	●
5559GH	Base cup w/o handle	●	○	●	○	●	○	●	○	●	○	●	○	●
5559UH	Base saucer	●	○	●	○	●	○	●	○	●	○	●	○	●
5558HH	Base cup	●	○	●	○	●	○	●	○	●	○	●	○	●
5558GH	Base cup w/o handle	●	○	●	○	●	○	●	○	●	○	●	○	●
5561HH	Base cup	●	○	●	○	●	○	●	○	●	○	●	○	●
5557UH	Base saucer	●	○	●	○	●	○	●	○	●	○	●	○	●
5541HH	Base mug	●	○	●	○	●	○	●	○	●	○	●	○	●
5542HH	Base mug	●	○	●	○	●	○	●	○	●	○	●	○	●
5542GH	Base mug w/o handle	●	○	●	○	●	○	●	○	●	○	●	○	●
5562HH	Base cup	●	○	●	○	●	○	●	○	●	○	●	○	●
3021UH	Base saucer	●	○	●	○	●	○	●	○	●	○	●	○	●
6005HH	Furo dinner plate	●	○	●	○	●	○	●	○	●	○	●	○	●
6004HH	Furo dinner plate	●	○	●	○	●	○	●	○	●	○	●	○	●
6001HH	Furo lunch plate	●	○	●	○	●	○	●	○	●	○	●	○	●
6063HH	Furo lunch plate	●	○	●	○	●	○	●	○	●	○	●	○	●
6064HH	Furo appetizer plate	●	○	●	○	●	○	●	○	●	○	●	○	●
6065HH	Furo bread plate	●	○	●	○	●	○	●	○	●	○	●	○	●
6104HH	Furo embossed plate	●	○	●	○	●	○	●	○	●	○	●	○	●
6263HH	Furo embossed deep plate	●	○	●	○	●	○	●	○	●	○	●	○	●
6265CH	Furo embossed bowl	●	○	●	○	●	○	●	○	●	○	●	○	●
2505HH	Verde plate	●	○	●	○	●	○	●	○	●	○	●	○	●
2504HH	Verde plate	●	○	●	○	●	○	●	○	●	○	●	○	●
2563HH	Verde plate	●	○	●	○	●	○	●	○	●	○	●	○	●
2564HH	Verde plate	●	○	●	○	●	○	●	○	●	○	●	○	●
2518HH	Verde deep plate	●	○	●	○	●	○	●	○	●	○	●	○	●
3017HH	Combo deep plate	●	○	●	○	●	○	●	○	●	○	●	○	●
3018HH	Combo deep plate	●	○	●	○	●	○	●	○	●	○	●	○	●
2541HH	Verde mug	●	○	●	○	●	○	●	○	●	○	●	○	●
2542HH	Verde mug	●	○	●	○	●	○	●	○	●	○	●	○	●
2705HH	Grad plate	●	○	●	○	●	○	●	○	●	○	●	○	●
2704HH	Grad plate	●	○	●	○	●	○	●	○	●	○	●	○	●
2702HH	Grad plate	●	○	●	○	●	○	●	○	●	○	●	○	●
2701HH	Grad plate	●	○	●	○	●	○	●	○	●	○	●	○	●
2763HH	Grad plate	●	○	●	○	●	○	●	○	●	○	●	○	●
2764HH	Grad plate	●	○	●	○	●	○	●	○	●	○	●	○	●
2765HH	Grad plate	●	○	●	○	●	○	●	○	●	○	●	○	●

Decor list

	Skylgje Stocked 7x11	Eila Stocked 7x18 5x01 7x11	Spray Stocked 5x01 (buffer 8x15)	Strök Stocked 7x11	Streif Not stocked	Rustikk Strök Stocked 5x01	Dryss Stocked 7x11	360 Stocked 5x39 (buffer 5x01)	Motti Stocked 7x15	Flom Stocked 7x11	Duo Stocked 7x15 + 7x09	Mono Stocked 7x09	Sirkel Stocked 8x10	Fade Not stocked
2707HH	Grad deep plate	●	○	●	○	●	○	●	○	●	○	●	○	●
2706HH	Grad deep plate	●	○	●	○	●	○	●	○	●	○	●	○	●
2710HH	Grad plate semi deep	●	○	●	○	●	○	●	○	●	○	●	○	●
2703HH	Grad plate wide rim	●	○	●	○	●	○	●	○	●	○	●	○	●
2708HH	Grad deep plate wide rim	●	○	●	○	●	○	●	○	●	○	●	○	●
3705HH	Bris plate	●	○	●	○	●	○	●	○	●	○	●	○	●
3704HH	Bris plate	●	○	●	○	●	○	●	○	●	○	●	○	●
3701HH	Bris plate	●	○	●	○	●	○	●	○	●	○	●	○	●
3763HH	Bris plate	●	○	●	○	●	○	●	○	●	○	●	○	●
3764HH	Bris plate	●	○	●	○	●	○	●	○	●	○	●	○	●
3765HH	Bris plate	●	○	●	○	●	○	●	○	●	○	●	○	●
3707HH	Bris plate deep	●	○	●	○	●	○	●	○	●	○	●	○	●
3706HH	Bris plate deep	●	○	●	○	●	○	●	○	●	○	●	○	●
3710HH	Bris plate semi deep	●	○	●	○	●	○	●	○	●	○	●	○	●
3703HH	Bris plate wide rim	●	○	●	○	●	○	●	○	●	○	●	○	●
3708HH	Bris plate deep wide rim	●	○	●	○	●	○	●	○	●	○	●	○	●
3761UH	Bris saucer/plate	●	○	●	○	●	○	●	○	●	○	●	○	●
3757UH	Bris saucer/plate	●	○	●	○	●	○	●	○	●	○	●	○	●
3759UH	Bris saucer/plate	●	○	●	○	●	○	●	○	●	○	●	○	●
2813HH	Ting plate	●	○	●	○	●	○	●	○	●	○	●	○	●
2801HH	Ting plate	●	○	●	○	●	○	●	○	●	○	●	○	●
2861CH	Ting plate	●	○	●	○	●	○	●	○	●	○	●	○	●
2857CH	Ting plate	●	○	●	○	●	○	●	○	●	○	●	○	●
2853HH	Ting deep plate	●	○	●	○	●	○	●	○	●	○	●	○	●
2852HH	Ting deep plate	●	○	●	○	●	○	●	○	●	○	●	○	●
2851HH	Ting deep plate	●	○	●	○	●	○	●	○	●	○	●	○	●
2863HH	Ting plate	●	○	●	○	●	○	●	○	●	○	●	○	●
2859HH	Ting cup	●	○	●	○	●	○	●	○	●	○	●	○	●
2859GH	Ting cup w/o handle	●	○	●	○	●	○	●	○	●	○	●	○	●
2857HH	Ting cup	●	○	●	○	●	○	●	○	●	○	●	○	●
2857GH	Ting cup w/o handle	●	○	●	○	●	○	●	○	●	○	●	○	●
2857UH	Ting saucer	●	○	●	○	●	○	●	○	●	○	●	○	●
2842HH	Ting mug	●	○	●	○	●	○	●	○	●	○	●	○	●
2842GH	Ting mug w/o handle	●	○	●	○	●	○	●	○	●	○	●	○	●
6904HH	Pax plate	●	○	●	○	●	○	●	○	●	○	●	○	●
6901HH	Pax plate	●	○	●	○	●	○	●	○	●	○	●	○	●
6902HH	Pax plate	●	○	●	○	●	○	●	○	●	○	●	○	●
6918HH	Pax bowl	●	○	●	○	●	○	●	○	●	○	●	○	●
6919HH	Pax bowl	●	○	●	○	●	○	●	○	●	○	●	○	●
6915HH	Pax tray/plate	●	○	●	○	●	○	●	○	●	○	●	○	●
6914HH	Pax plate	●	○	●	○	●	○	●	○	●	○	●	○	●
6925HH	Pax plate	●	○	●	○	●	○	●	○	●	○	●	○	●
2404HH	24-series plate	●	○	●	○	●	○	●	○	●	○	●	○	●
2401HH	24-series plate	●	○	●	○	●	○	●	○	●	○	●	○	●

Decor list

		Skygge Stocked 7x11	Ela Stocked 7x18 5x01 7x11	Spray Stocked 5x01 (Buffer 8x15)	Strök Stocked 7x11	Streif Not stocked	Rustikk Strök Stocked 5x01	Dryss Stocked 7x11	360 Stocked 5x39 (Buffer 5x01)	Motti Stocked 7x15	Flom Stocked 7x11	Duo Stocked 7x15 + 7x09	Mono Stocked 7x09	Sirkel Stocked 8x10	Fade Not stocked
2463HH	24-series plate	●	●	●	●	●	●	●	●	●	●	●	●	○	●
2464HH	24-series plate	●	●	●	●	●	●	●	●	●	●	●	●	○	●
2407HH	24-series deep plate	●	●	●	●	●	●	●	●	●	●	●	●	○	●
2448HH	24-series deep plate	●	●	●	●	●	●	●	●	●	●	●	●	○	●
2406HH	24-series plate semi deep	●	●	●	●	●	●	●	●	●	●	●	●	○	●
2441HH	24-series cup	●	●	●	●	●	●	●	●	●	●	●	●	○	●
2441GH	24-series cup w/o handle	●	●	●	●	●	●	●	●	●	●	●	●	○	●
1305HH	Klassik plate	●	●	●	●	●	●	●	●	●	●	●	●	○	●
1304HH	Klassik plate	●	●	●	●	●	●	●	●	●	●	●	●	○	●
1301HH	Klassik plate	●	●	●	●	●	●	●	●	●	●	●	●	○	●
1363HH	Klassik plate	●	●	●	●	●	●	●	●	●	●	●	●	○	●
1364HH	Klassik plate	●	●	●	●	●	●	●	●	●	●	●	●	○	●
1307HH	Klassik deep plate	●	●	●	●	●	●	●	●	●	●	●	●	○	●
1306HH	Klassik deep plate	●	●	●	●	●	●	●	●	●	●	●	●	○	●
1715HH	Klassik oval plate	●	●	●	●	●	●	●	●	●	●	●	●	○	●
1714HH	Klassik oval plate	●	●	●	●	●	●	●	●	●	●	●	●	○	●
1759GH	Klassik sugar bowl	●	●	●	●	●	●	●	●	●	●	●	●	○	●
1858HH	Klassik stacking cup	●	●	●	●	●	●	●	●	●	●	●	●	○	●
1758HH	Klassik cup	●	●	●	●	●	●	●	●	●	●	●	●	○	●
1757UH	Klassik saucer	●	●	●	●	●	●	●	●	●	●	●	●	○	●
1841HH	Klassik stacking mug	●	●	●	●	●	●	●	●	●	●	●	●	○	●
1741HH	Klassik mug	●	●	●	●	●	●	●	●	●	●	●	●	○	●
1742HH	Klassik mug	●	●	●	●	●	●	●	●	●	●	●	●	○	●
2004HH	35-series plate	●	●	●	●	●	●	●	●	●	●	●	●	○	●
2001HH	35-series plate	●	●	●	●	●	●	●	●	●	●	●	●	○	●
2063HH	35-series plate	●	●	●	●	●	●	●	●	●	●	●	●	○	●
2064HH	35-series plate	●	●	●	●	●	●	●	●	●	●	●	●	○	●
2006HH	35-series deep plate	●	●	●	●	●	●	●	●	●	●	●	●	○	●
3588HH	35-series sugar bowl	●	●	●	●	●	●	●	●	●	●	●	●	○	●
3557HH	35-series stacking cup	●	●	●	●	●	●	●	●	●	●	●	●	○	●
3557UH	35-series saucer	●	●	●	●	●	●	●	●	●	●	●	●	○	●
3560HH	35-series stacking cup	●	●	●	●	●	●	●	●	●	●	●	●	○	●
3560UH	35-series saucer	●	●	●	●	●	●	●	●	●	●	●	●	○	●
3561HH	35-series stacking cup	●	●	●	●	●	●	●	●	●	●	●	●	○	●
3561UH	35-series saucer	●	●	●	●	●	●	●	●	●	●	●	●	○	●
3542HH	35-series stacking mug	●	●	●	●	●	●	●	●	●	●	●	●	○	●
3545HH	35-series stacking mug	●	●	●	●	●	●	●	●	●	●	●	●	○	●
8116HH	Brem deep plate	●	●	●	●	●	●	●	○	●	●	●	●	○	●
8117HH	Brem deep plate	●	●	●	●	●	●	●	○	●	●	●	●	○	●
8118HH	Brem deep plate	●	●	●	●	●	●	●	○	●	●	●	●	○	●
6703HH	Frame plate	●	●	●	●	●	●	●	●	●	●	●	●	○	●
6763HH	Frame plate	●	●	●	●	●	●	●	●	●	●	●	●	○	●
6764HH	Frame plate	●	●	●	●	●	●	●	●	●	●	●	●	○	●
2613HH	Europa plate	●	●	●	●	●	●	●	●	●	●	●	●	○	●
0535HH	Childrens plate	●	●	●	●	●	●	●	●	●	●	●	●	○	●

Decor list

		Skygge Stocked 7x11	Ela Stocked 7x18 5x01 7x11	Spray Stocked 5x01 (buffer 8x15)	Strök Stocked 7x11	Streif Not stocked	Rustikk Strök Stocked 5x01	Dryss Stocked 7x11	360 Stocked 5x39 (buffer 5x01)	Motti Stocked 7x15	Flom Stocked 7x11	Duo Stocked 7x15 + 7x09	Mono Stocked 7x09	Sirkel Stocked 8x10	Fade Not stocked
0536HH	Childrens deep plate	●	●	●	●	●	●	●	●	●	●	●	●	○	●
3152HH	Combo deep plate	●	●	●	●	●	●	●	●	●	●	●	●	○	●
3151HH	Combo deep plate	●	●	●	●	●	●	●	●	●	●	●	●	○	●
3170HH	Mingle reception plate	●	●	●	●	●	●	●	●	●	●	●	●	○	●
1259HH	1200-series cup	●	●	●	●	●	●	●	●	●	●	●	●	○	●
1259UH	1200-series saucer	●	●	●	●	●	●	●	●	●	●	●	●	○	●
1260HH	1200-series cup	●	●	●	●	●	●	●	●	●	●	●	●	○	●
1260GH	1200-series cup	●	●	●	●	●	●	●	●	●	●	●	●	○	●
1260UH	1200-series saucer	●	●	●	●	●	●	●	●	●	●	●	●	○	●
1261HH	1200-series cup	●	●	●	●	●	●	●	●	●	●	●	●	○	●
1262HH	1200-series cup	●	●	●	●	●	●	●	●	●	●	●	●	○	●
1059HH	1000-series cup	●	●	●	●	●	●	●	●	●	●	●	●	○	●
1058HH	1000-series cup	●	●	●	●	●	●	●	●	●	●	●	●	○	●
1059UH	1000-series saucer/plate	●	●	●	●	●	●	●	●	●	●	●	●	○	●
1057HH	1000-series cup	●	●	●	●	●	●	●	●	●	●	●	●	○	●
1057UH	1000-series saucer/plate	●	●	●	●	●	●	●	●	●	●	●	●	○	●
1060HH	1000-series cup	●	●	●	●	●	●	●	●	●	●	●	●	○	●
1061HH	1000-series cup	●	●	●	●	●	●	●	●	●	●	●	●	○	●
1061UH	1000-series saucer/plate	●	●	●	●	●	●	●	●	●	●	●	●	○	●
1041HH	1000-series mug	●	●	●	●	●	●	●	●	●	●	●	●	○	●
1160HH	1100-series stacking cup/-mug	●	●	●	●	●	●	●	●	●	●	●	●	○	●
1160UH	1100-series saucer	●	●	●	●	●	●	●	●	●	●	●	●	○	●
1542HH	Stacking mug	●	●	●	●	●	●	●	●	●	●	●	●	○	●
1541HH	Stacking mug	●	●	●	●	●	●	●	●	●	●	●	●	○	●
1641HH	Stacking mug	●	●	●	●	●	●	●	●	●	●	●	●	○	●
3041HH	30-series mug	●	●	●	●	●	●	●	●	●	●	●	●	○	●
3042HH	30-series mug	●	●	●	●	●	●	●	●	●	●	●	●	○	●
3040HH	30-series mug	●	●	●	●	●	●	●	●	●	●	●	●	○	●
0537HH	Childrens mug	●	●	●	●	●	●	●	●	●	●	●	●	○	●
0957UH	900-series saucer	●	●	●	●	●	●	●	●	●	●	●	●	○	●
1110HH	Fri tray /Large	●	○	●	●	○	●	●	●	●	●	●	●	○	●
1111HH	Fri tray /Large	●	○	●	●	○	●	●	●	●	●	●	●	○	●
1112HH	Fri tray/plate /Large	●	○	●	●	○	●	●	●	●	●	●	●	○	●
3310HH	Tri tray /Large	●	●	●	●	●	●	●	●	●	●	●	●	○	●
3312HH	Tri tray /Large	●	●	●	●	●	●	●	●	●	●	●	●	○	●
3314HH	Tri tray/plate	●	●	●	●	●	●	●	●	●	●	●	●	○	●
1627HH	Arena form low /Large	●	●	●	●	●	●	●	●	●	●	●	●	○	●
1626HH	Arena form low /Large	●	●	●	●	●	●	●	●	●	●	●	●	○	●
1640HH	Arena form /Large	●	●	●	●	●	●	●	●	●	●	●	●	○	●
1638HH	Arena form /Large	●	●	●	●	●	●	●	●	●	●	●	●	○	●
1637HH	Arena form /Large	●	●	●	●	●	●	●	●	●	●	●	●	○	●
1630HH	Arena form	●	●	●	●	●	●	●	●	●	●	●	●	○	●
1630HH	Arena form	●	●	●	●	●	●	●	●	●	●	●	●	○	●
1636HH	Arena form	●	●	●	●	●	●	●	●	●	●	●	●	○	●
1635HH	Arena form	●	●	●	●	●	●	●	●	●	●	●	●	○	●

Decor list

	Skygge Stocked 7x11	Eia Stocked 7x18 5x01 7x11	Spray Stocked 5x01 (Buffer 8x15)	Strök Stocked 7x11	Streif Not stocked	Rustikk Strök Stocked 5x01	Dryss Stocked 7x11	360 Stocked 5x39 (Buffer 5x01)	Motti Stocked 7x15	Flom Stocked 7x11	Duo Stocked 7x15 + 7x09	Mono Stocked 7x09	Sirkel Stocked 8x10	Fade Not stocked
1633HH	Arena Spiss form	●	●	●		●	●	●						
1634HH	Arena Spiss form	●	●	●		●	●	●						
1710HH	Klassik tray high edge /Large	●	○	●	●	●	○	●	○					
1711HH	Klassik tray high edge /Large	●	○	●	●	●	○	●	○					
1712HH	Klassik bowl /Large	●	○	●	●	●	○	●	○					
1717HH	Klassik bowl /Large	●	●	●	●	●	●	●	●					
1718HH	Klassik bowl	●	●	●	●	●	●	●	●					
1719HH	Klassik bowl	●	●	●	●	●	●	●	●					
4033HH	Boks bowl /Large	●	●	●		●	●	●						
4038HH	Boks bowl /Large	●	●	●		●	●	●						
4039HH	Boks bowl /Large	●	●	●		●	●	●						
4036HH	Boks bowl	●	●	●		●	●	●						
4037HH	Boks bowl	●	●	●		●	●	●						
4035HH	Boks bowl	●	●	●		●	●	●						
1081HH	1000-series jar/bowl /Large	●	○	●	○	●	○	●	○					
1082HH	1000-series jar/bowl /Large	●	○	●	○	●	○	●	○					
1083HH	1000-series jar/bowl /Large	●	○	●	○	●	○	●	○					
1084HH	1000-series jar/bowl	●	●	●		●	●	●	●					
1061GH	1000-series bowl	●	●	●		●	●	●	●					
1060GH	1000-series bowl	●	●	●		●	●	●	●					
1057GH	1000-series bowl	●	●	●		●	●	●	●					
1059GH	1000-series bowl	●	●	●		●	●	●	●					
1800HH	Stacking bowl /Large	●	●	●		●	○	●	●		●			
1814HH	Stacking bowl /Large	●	●	●		●	○	●	●		●			
1816HH	Stacking bowl /Large	●	●	●		●	○	●	●		●			
1817HH	Stacking bowl /Large	●	●	●		●	●	●	●		●			
1818HH	Stacking bowl	●	●	●		●	●	●	●		●			
1819HH	Stacking bowl	●	●	●		●	●	●	●		●			
1820HH	Stacking bowl	●	●	●		●	●	●	●		●			
1821HH	Stacking bowl	●	●	●		●	●	●	●		●			
1822HH	Stacking bowl	●	●	●		●	●	●	●		●			
1823HH	Stacking bowl	●	●	●		●	●	●	●		●			
1824HH	Stacking bowl	●	●	●		●	●	●	●		●			
1782HH	Jar/ bowl /Large	●	●	●		●	●	●	●					
1783HH	Jar/ bowl /Large	●	●	●		●	●	●	●					
1784HH	Jar/ bowl	●	●	●		●	●	●	●					
1556HH	Kule bowl /Large	●				●	●	●	●					
1554HH	Kule bowl /Large	●				●	●	●	●					
1552HH	Kule bowl /Large	●				●	●	●	●					
2617HH	Europa bowl /Large	●	●	●		●	●	●	●					
2618HH	Europa bowl	●	●	●		●	●	●	●					
2619HH	Europa bowl	●	●	●		●	●	●	●					
2661GH	Europa bowl	●	●	●		●	●	●	●					
3122HH	System stacking bowl	●	●	●		●	●	●	●					
1518HH	Combo bowl	●	●	●		●	●	●	●					
1519HH	Combo bowl	●	●	●		●	●	●	●					
4588HH	45-series sugar bowl	●	●	●		●	●	●	●					
4588LH	45-series lid for 4588hh/4592hh	●	●	●		●	●	●	●					

Decor list

	Skygge Stocked 7x11	Eia Stocked 7x18 5x01 7x11	Spray Stocked 5x01 (buffer 8x15)	Strök Stocked 7x11	Streif Not stocked	Rustikk Strök Stocked 5x01	Dryss Stocked 7x11	360 Stocked 5x39 (buffer 8x01)	Motti Stocked 7x15	Flom Stocked 7x11	Duo Stocked 7x15 + 7x09	Mono Stocked 7x09	Sirkel Stocked 8x10	Fade Not stocked
3580HH	35-series egg cup				●	●	●							
1380HH	Klassik egg cup				●	●	●							
2180HH	Base egg cup		●	●	●	●	●							
1575HH	15-series jug /Large	●			●	●	●	●						
1576HH	15-series jug /Large	●			●	●	●	●						
1593GH	15-series cream jug	●			●	●	●	●						
1594GH	15-series cream jug	●			●	●	●	●						
1595GH	15-series cream jug	●			●	●	●	●						
4585HH	45-series jug high /Large	●					●	●						
4586HH	45-series jug high /Large	●					●	●						
4585CH	45-series jug low /Large	●					●	●						
4586CH	45-series jug low /Large	●					●	●						
4585LH	45-series lid for 4585hh/4585ch	●	●	●			●	●	●					
4586LH	45-series lid for 4586hh/4586ch	●	●	●			●	●	●					
3575HH	35-series jug /Large	●				●	●	●	●					
4593HH	45-series cream jug	●			●	●	●	●	●					
4594HH	45-series cream jug	●			●	●	●	●	●					
4594GH	45-series cream jug w/o handle	●			●	●	●	●	●					
4509HH	45-series gravy boat	●				●	●	●	●					
4509UH	45-series saucer oval	●	●	●		●	●	●	●					
4008HH	Salt						●	●	●					
4009HH	Pepper						●	●	●					
4034HH	Toothpick holder				●	●	●	●	●					
3534HH	35-series toothpick holder				●	●	●	●	●					
5710HH	Gastronorm tray 1/1 low /Large	●	●	●		●	●	●	●					
5712HH	Gastronorm tray 2/4 low /Large	●	●	●		●	●	●	●					
5709HH	Gastronorm tray 1/2 deep /Large	●	●	●		●	●	●	●					
5706HH	Gastronorm tray 1/2 high /Large	●	●	●		●	●	●	●					
5701HH	Gastronorm tray 1/2 low /Large	●	●	●		●	●	●	●					
5707HH	Gastronorm tray 1/3 high /Large	●	●	●		●	●	●	●					
5702HH	Gastronorm tray 1/3 low /Large	●	●	●		●	●	●	●					
5702HH	Gastronorm tray 1/3 low /Large	●	●	●		●	●	●	●					
5715HH	Gastronorm tray 1/6 deep	●	●	●		●	●	●	●					
5714HH	Gastronorm tray 1/6 high	●	●	●		●	●	●	●					
2117HH	GN tray 1/1 /Large	●	○	●	○	●	○	●	○					●
2116HH	GN tray 2/4 /Large	●	○	●	○	●	○	●	○					●
2115HH	GN tray/plate 2/3 /Large	●	○	●	○	●	○	●	○					●
2114HH	GN plate 1/2 /Large	●	○	●	○	●	○	●	○					●
2113HH	GN plate 1/3 /Large	●	●	●		●	●	●	●					●
2154HH	Gastronorm tray 1/4 low	●	●	●		●	●	●	●					●
2150HH	Gastronorm tray 1/8 low	●	●	●		●	●	●	●					●
2153HH	Gastronorm tray 1/16 high	●	●	●		●	●	●	●					●
2151HH	Gastronorm tray 1/16 low	●	●	●		●	●	●	●					●
2152HH	Gastronorm tray 1/32 low	●	●	●		●	●	●	●					●

Colors don't clash

They are also the spice of life. At Figgjo, we spend a lot of time developing new colors in our dedicated color lab. We have sixty unique shades of color to choose from.



2x14 1345 C GOLDEN HAZE	2x16 114 EC BRIGHT YELLOW	2x03 122 C SUNSHINE	2x01 131 EC OCHER	2x15 7407 EC MUSTARD*	2x02 465 C OLD GOLD*	4x02 157 C AUTUMN GLORY	4x03 172 EC AMBERGLOW*
4x10 1505 C ORANGE ENERGY*	4x11 1375 C MANGO	1x09 1795 EC FIESTA RED*	1x10 1805 EC AURORA RED*	1x15 1807 EC CHERRIES	1x19 7421 C BURGUNDY*	1x18 183 EC CAMEO PINK*	1x02 499 C FADED ROSE
1x27 484 C TERRA COTTA*	1x22 7415 C SOFT PINK	1x21 178 EC BLUSH*	6x08 2715 EC VIOLET WONDER	6x02 272 EC LAVENDER	6x11 2665 EC LILAC*	6x10 2582 EC ORCHID*	3x25 REF. BLUE EC COBALT
3x14 291 C AQUAMARINE*	3x21 644 EC ASH BLUE*	3x08 652 C DUSK BLUE	3x17 284 EC SKY BLUE	3x39 298 C RIVER BLUE*	3x40 285 EC REGATTA*	3x44 287 EC ROYAL BLUE*	3x32 7472 EC MINT*
3x35 631 C TURQUOISE*	3x42 7477 C PETROLIUM*	5x10 553 C FOREST GREEN*	5x09 316 C DEEP FOREST*	5x30 5565 C CAMEO GREEN*	5x01 5815 C OLIVE*	5x06 575 C PIQUANT GREEN	5x14 375 EC BRIGHT LIME*
5x39 452 EC GRAY GREEN*	5x37 7494 C QUIET GREEN*	5x26 349 EC RETRO GREEN*	5x28 362 EC GRASS GREEN*	5x08 359 C PISTACHIO GREEN	7x11 BLACK 5 C MAHOGANY*	8x01 4645 C MILK CHOCOLATE	7x09 465 EC DARK OLD GOLD
7x15 7501 EC BEIGE	7x18 4225 EC CAFÉ CREME*	8x23 421 C CLOUDY DAY*	8x24 429 EC FOGGY FIVE	8x09 403 C PEARL*	8x15 C GRAY 11 C RAINY DAY*	8x10 426 EC ANTRASITE*	

These colors are our hand decorating colors only. For logo/graphic decals, additional colors are available. Please note that the colors shown here may vary slightly from the actual color. For updated color palette, visit figgjo.com/colors

*Colors suitable for the Flom decor technique.

Let's talk

If you want to place an order or have any questions about our products, please stop by your nearest Figgjo distributor or pay us a visit at the factory. You will meet knowledgeable people who are keen to help you with your project.

Find your distributor at figgjo.com/distributors

ADDRESS

Aaslandsbakken 1
4332 Figgjo
Norway
post@figgjo.com
+47 51 68 35 00

E-MAIL PHONE



Thank you

Our world is growing, and we're meeting so many great people along the way. Although Figgjo makes porcelain, it is all about the people we make the porcelain for.

